

**CAMDENTON R-III SCHOOL DISTRICT
MINUTES OF BOARD OF EDUCATION MEETING**

**Regular Meeting – Administration Building, Board Room
February 11, 2013 – 5:30 p.m.**

Present:

Nancy A. Masterson	President	Dr. Tim Hadfield	Superintendent
Chris C. McElyea	Vice-President	Dr. Brian Henry	Deputy Superintendent
Selynn Barbour	Treasurer	Roma Lee France	Assistant Superintendent
John L. Beckett	Member	Dr. Jim Rich	Assistant Superintendent
Jim Besancenez	Member	Linda Leu	Secretary
Jackie Schulte	Member		
Laura L. Martin	Member		

Absent:

Prior to the start of the meeting School Board members were recognized for their time and energy donated to the Camdenton R-III District. Various groups, organizations, students, and staff provided treats and gifts to honor Board members.

I. CALL TO ORDER & RECITE PLEDGE OF ALLEGIANCE

The Camdenton R-III Board of Education met in Regular Session in the Administration Building Board Room on Monday, February 11, 2013. The meeting was called to order by President Masterson at 5:40 p.m. The pledge of allegiance was recited.

II. APPROVAL OF AGENDA

Regular Meeting – February 11, 2013

Motion: Move to approve the agenda of the regular meeting of February 11, 2013, as presented.
Barbour/McElyea - all ayes.

III. CLASSIFIED EMPLOYEE OF THE MONTH

Deb Allen, Office Manager for the Transportation Department since August 2005, was recognized as the February "Classified Employee of the Month."

No motion necessary.

IV. PUBLIC COMMENT

There was no public comment.

V. NEW BUSINESS

A. RECOGNITION OF CAREER AND TECHNICAL EDUCATION MONTH

In recognition of Career & Technical Education month the students and staff at Lake Career & Technical Center showed their appreciation to the Board of Education for their continued support. Kaslyn Alexander, Hayle Paulsen, and Miranda Theis, CHS seniors in Mrs. Wackerman's Medical Terminology class, presented on behalf of Career & Technical Education Month.

No motion necessary.

VI. CONSENT ITEMS

- A. Approved Minutes and Documentation of Regular Meeting – January 14, 2013
- B. Approved Minutes and Documentation of Special Meeting – January 22, 2013, as revised.

C. Excellence in Education Certificates

Dogwood Elementary	Jeannie Hannigan
Hawthorn Elementary	Lisa Vasquez
Oak Ridge Intermediate	Cathy Flanigan-Brick
Oak Ridge Intermediate	Melodee Derby
Middle School	Vicki Schoonover
Middle School	Lee Smith
High School/Horizons	Mike Fenn
LCTC	Bill Kurtz
Hurricane Deck Elementary	Candice Thomas

D. Technology Bids for a Wireless Tablet Lab and Network Servers as Recommended

E. Accept Bid Regarding District Investment of Funds

F. Set Graduation Date for Saturday, May 18, 2013

Motion: Move to approve Minutes and Documentation of Regular Meeting – January 14, 2013.
Beckett/McElyea - all ayes. Barbour abstained, absent.

Motion: Move to accept the bid as recommended regarding District investment of funds.
Beckett/Schulte – all ayes. McElyea abstained.

Motion: Move to approve consent items B, C, D, and F as presented.
Beckett/McElyea – all ayes.

VII. UNFINISHED BUSINESS

A. 2013-2014 CALENDAR HEARING

CAMDENTON R-III SCHOOL DISTRICT NOTICE OF HEARING:

A hearing will be held on the 2013-2014 school year calendar at Board of Education meeting on February 11, 2013, at 5:30 p.m., Administration Building Board Room, 172 Dare Blvd, Camdenton, MO 65020. Citizens may be heard on the proposed school starting date of more than ten days prior to the first Monday in September.

In accordance with State law, any School District starting school prior to ten days before first Monday in September (Labor Day) must hold a public hearing. Publication of the hearing was printed in the local newspaper and sent to local radio stations.

Superintendent Hadfield presented three calendar options as created by a committee. Superintendent Hadfield reviewed calendar option 1 with the Board and recommended it to the Board.

Motion: Move to adopt Calendar 1 for the 2013-2014 school year as presented.
Beckett/Barbour – all ayes.

VIII. APPROVAL OF BILLS

Motion: Move to approve the bills with addendum as submitted.

McElyea/Schulte – all ayes.

IX. APPROVAL OF TREASURER'S REPORTS

Motion: Move to approve the January 2013 Treasurer's Report as submitted.

Martin/Barbour - all ayes.

X. NEW BUSINESS (Continued)

B. SCHOOL RESOURCE OFFICER ANNUAL REPORT

Officer Chris Williams gave a report on the progress the Department is making, comparing calendar year 2012 to calendar year 2011. The goal of the school resource officer program has been to establish a proactive position on school discipline and to establish a relationship between students and law enforcement.

No motion necessary.

C. REVIEW DESIGN OPTIONS FOR PROPOSED OSAGE BEACH ELEMENTARY & HURRICANE DECK ELEMENTARY SCHOOLS

Michael Kautz and Kenny Southwick from ACI/Frangkiser Hutchens reviewed preliminary design options for proposed buildings and campaign strategies. Information regarding an election committee was also shared.

D. 2013-2014 PERSONNEL NEEDS REPORT

Dr. Jim Rich presented the 2013-2014 Personnel Needs Report. This report provided student/teacher ratios in each building and recommendations concerning certified and classified staff as requested by building and program administrators.

No motion necessary.

E. SCHOOL IMPROVEMENT UPDATE

Dr. Brian Henry briefed the Board on mid-year building reviews.

No motion necessary.

XI. BOARD PRESIDENT'S WRAP-UP

This is an opportunity for the Board to report on upcoming meetings, meetings attended, registrations, and deadlines. The following items were discussed:

- Special Board Meeting – February 15, 2013, 9:30 a.m.
- Legislative Forum - February 19, 2013 (Registered: Dr. Hadfield, Mrs. Masterson, Mrs. Barbour, Mrs. Martin, Mr. Beckett)
- School Health Advisory Meeting – February 21, 5:30 p.m.
- Regional Leadership Committee Meeting – March 6, Lebanon
- MSBA Spring Regional Meeting – April 17, Dixon R-I
- Elegant Evening - Friday, April 19, 2013

No motion necessary.

XII. EXECUTIVE SESSION

In compliance with State Statute 610.021 (closed meetings and closed records), move that the Board go into Executive Session for the following purposes:

- 1) Lease, purchase, or sale of real estate (610.021)(2).
- 2) Hiring, firing, disciplining, or promoting particular employees (610.021)(3).
- 3) Scholastic probation, expulsion, or graduation of identifiable individuals (610.021)(6).
- 4) Individually identifiable personnel records, performance ratings, or records pertaining to employees (610.021)(13).

Motion: Move to adjourn to Executive Session.

McElyea/Beckett - Roll call vote: Beckett – aye, Barbour – aye, McElyea – aye, Masterson – aye, Martin – aye, Besancenez – aye, and Schulte – aye.

XIII. ADJOURN MEETING

Motion: Move that the meeting adjourn.

Barbour/Beckett - all ayes.

Meeting adjourned at 8:00 p.m.

Nancy A. Masterson – President of the Board

Linda Leu – Secretary of the Board

DRAFT

Camdenton R-III School District

Board of Education Meeting Regular Session - Administration Building, Board Room February 11, 2013 – 5:30 p.m.

*In recognition of School Board Appreciation Week January 20-26,
Camdenton R-III staff will recognize Board members at the February Meeting
beginning at 5:15 p.m.*

AGENDA

- I. **CALL TO ORDER & RECITE PLEDGE OF ALLEGIANCE**
- II. **APPROVAL OF AGENDA**
- III. **CLASSIFIED EMPLOYEE OF THE MONTH**
Background: A representative of the Classified Employee Association will be present to recognize the February "Classified Employee of the Month."
- IV. **PUBLIC COMMENT**
Public Participation at Board Meetings, Policy BDDH
- V. **NEW BUSINESS**
 - A. **RECOGNITION OF CAREER AND TECHNICAL EDUCATION MONTH**
Background: In recognition of Career & Technical Education month the students and staff at Lake Career & Technical Center would like to take a moment to show their appreciation to the Board of Education for their continued support. Kaslyn Alexander, Hayle Paulsen, and Miranda Theis, CHS seniors in Mrs. Wackerman's Medical Terminology class, will be presenting on behalf of Career & Technical Education Month.
- VI. **CONSENT ITEMS**
 - A. Approve Minutes and Documentation of Regular Meeting – January 14, 2013
 - B. Approve Minutes and Documentation of Special Meeting – January 22, 2013
 - C. Excellence in Education Certificates
 - D. Technology Bids
 - E. Accept Bid Regarding District Investment of Funds
 - F. Set Graduation Date for Saturday, May 18, 2013
- VII. **UNFINISHED BUSINESS**
 - A. **2013-2014 CALENDAR HEARING**

CAMDENTON R-III SCHOOL DISTRICT NOTICE OF HEARING:

A hearing will be held on the 2013-2014 school year calendar at Board of Education meeting on February 11, 2013, at 5:30 p.m., Administration Building Board Room, 172 Dare Blvd, Camdenton, MO 65020. Citizens may be heard on the proposed school starting date of more than ten days prior to the first Monday in September.

Background: In accordance with State law, any School District starting school prior to ten days before first Monday in September (Labor Day) must hold a public hearing. Publication of the hearing was printed in the local newspaper and sent to local radio stations.

Please find attached several calendar options.

Calendar 1 Calendar 2 Calendar 3

VIII. APPROVAL OF BILLS

Bills

IX. APPROVAL OF TREASURER'S REPORT

*Treasurer's Report
Financial Report Table
Financial Summary
Pledged Securities
Outstanding Investment Schedule
Self Insurance Financial Statement
Health Insurance Comparison
Statement Balance for Flex Plan*

X. NEW BUSINESS (Continued)

B. SCHOOL RESOURCE OFFICER ANNUAL REPORT

Background: Officer Chris Williams will give a report on the progress the Department is making. The goal of the school resource officer program has been to establish a proactive position on school discipline and to establish a relationship between students and law enforcement.

Resource Officer Report

C. REVIEW DESIGN OPTIONS FOR PROPOSED OSAGE BEACH ELEMENTARY & HURRICANE DECK ELEMENTARY SCHOOLS

Background: Michael Kautz and Kenny Southwick from ACI/Frangkiser Hutchens will review design options for proposed buildings. Information regarding an election committee will also be shared.

D. 2013-2014 PERSONNEL NEEDS REPORT

Background: Dr. Jim Rich will present the 2013-2014 Personnel Needs Report. This report will provide student/teacher ratios in each building and provide recommendations concerning certified and classified staff as requested by building and program administrators.

Personnel Needs Report

E. SCHOOL IMPROVEMENT UPDATE

Background: Dr. Brian Henry will brief the Board on mid-year building reviews.

XI. BOARD PRESIDENT'S WRAP-UP

Background: This is an opportunity for the Board to report on upcoming meetings, meetings attended, registrations, and deadlines.

- Special Board Meeting -- February 15, 2013, 9:30 a.m.

-
- Legislative Forum - February 19, 2013 (Registered: Dr. Hadfield, Mrs. Masterson, Mrs. Barbour, Mrs. Martin, Mr. Beckett, Mr. Besancenez)
 - Elegant Evening - Friday, April 19, 2013

XII. EXECUTIVE SESSION

In compliance with State Statute 610.021 (closed meetings and closed records), the Board will go into Executive Session for the following purposes:

- 1) Lease, purchase, or sale of real estate (610.021)(2).
- 2) Hiring, firing, disciplining, or promoting particular employees (610.021)(3).
- 3) Scholastic probation, expulsion, or graduation of identifiable individuals (610.021)(6).
- 4) Individually identifiable personnel records, performance ratings, or records pertaining to employees (610.021)(13).

XIII. ADJOURN MEETING

DRAFT

Bids for Wireless Tablet Lab

Item #	Item Description	Quantity	Tiger Direct	CORE
1	Acer ICONIA W510 tablets Windows 8 pro	31	\$18,027.43	22,695.10
2	Kensington KeyFolio Pro BT Keyboard Case	31	\$3,746.66	\$1,826.99

TOTAL	\$24,961.67	\$24,522.09
-------	-------------	-------------

We would like to go with CORE for the wireless lab.

Bid for Network Servers

We only received one bid from CORE in the amount of \$112,721.68.

Item #	Item Description	Quantity
1	Dell EqualLogic PS4100XV 12x 600GB 15K SAS Rack Rails 3yr Warranty	1
2	Power Edge R610 Windows Server Standard 2012 SQL Server 2012 Core License 96 GB 1333MHz RAM (12x8GB) PERC H700 RAID Controller 300GB 15K RPC SAS Drives Rack Rails 3yr Warranty	4
3	2 PowerConnect 24 port Managed Switches 10GbE and Stacking Capable Stacking Modules	2

We would like to reject this bid because of the cost and obtain additional quotes.

SUMMARY OF INVESTMENT OF FUNDS BIDS

TO: Central Bank of Lake of the Ozarks, First National Bank, US Bank, MOSIP,
 FROM: Tim Hadfield, Superintendent
 SUBJECT: Investment of Funds

The Camdenton R-III School District solicited bids on investment of funds. The District requested quotes on the following investments.

Investment Amount	Investment Date	Maturity Date	MOSIP		US Bank		RECOMMEND	
			% Paid on Investment	Interest Your Institution will Pay on Maturity	% Paid on Investment	Interest Your Institution will Pay on Maturity	% Paid on Investment	Interest Your Institution will Pay on Maturity
\$2,500,000	February 13, 2013	April 23, 2013			4/18/13 0.02%	\$88.89	0.06%	\$282.90
\$2,500,000	February 13, 2013	May 24, 2013			5/23/13 0.03%	\$206.25	0.06%	\$410.00
\$2,500,000	February 13, 2013	June 21, 2013	6/6/13 0.14%*	\$1,750.68**	6/20/13 0.04%	\$352.78	0.08%	\$700.16
\$2,500,000	February 13, 2013	July 23, 2013			7/18/13 0.06%	\$745.83	0.09%	\$985.60

All public school funds must be secured by pledged securities. Bidders were asked to provide any penalty charged for early withdrawal.

*Rates are subject to change based on market conditions. **CP/BA Term

CAMDENTON R-III SCHOOL DISTRICT OPTION 1

No Students

Prof. Dev./Collaboration
No Students

Early Release/Collaboration

Early Dismissal

Professional Development

August 2013

M	Tu	W	Th	F
			1	2
5	6	7	8	9
12	13			
	20	21	22	23
26	27	28	29	30

September 2013

M	Tu	W	Th	F
	3	4	5	6
9	10	11	12	13
16	17	18	19	20
23	24	25	26	27
30				

October 2013

M	Tu	W	Th	F
	1	2	3	4
7	8	9	10	11
14	15	16	17	
21	22	23	24	25
28	29	30	31	

November 2013

M	Tu	W	Th	F
				1
4	5	6	7	8
11	12	13	14	15
18	19	20	21	22
25	26			

December 2013

M	Tu	W	Th	F
2	3	4	5	6
9	10	11	12	13
16	17	18	19	20

Schedule

Aug. 7, 8, 9	New Teacher Orientation
Aug. 14, 15, 16, 19	Teacher Work Days
Aug. 15	Secondary Meet the Teacher Night
Aug. 16	Elementary Meet the Teacher Night
Aug. 20	SCHOOL BEGINS
Aug. 30	Professional Development/Collaboration
Sept. 2	Labor Day – No School
Sept. 13	12:30 Early Out, Prof Collaboration
Oct. 4	Homecoming
Oct. 17	<u>Last Day of 1st Quarter (41 days)</u>
	12:30 Early Out, Prof Collaboration
Oct. 18	Teacher Work Day
Oct. 22	Elem. & Intermediate Parent/Teacher Conferences 4-8:00 p.m.
Oct. 24	MS & HS Parent/Teacher Conferences 4-8:00 p.m.
Oct. 29	Elem., Intermediate, MS, HS Parent/Teacher Conferences 4-8:00 p.m.
Nov. 1	NO SCHOOL
Nov. 26	12:30 Early Out, Prof Collaboration
Nov. 27 through 29	Thanksgiving Vacation
Dec. 20	Christmas Vacation Begins at 12:30 p.m.
	<u>Last Day of 2nd Quarter (41 days)</u>
Dec. 23 through Jan. 2	Christmas Vacation
Jan. 3	Teacher Work Day/Collaboration
Jan. 6	School Resumes
Jan. 20	Professional Development/Collaboration
Feb. 14	12:30 Early Out, Prof Collaboration
Feb. 17	Presidents' Day – No School
Mar. 13	<u>Last Day of 3rd Quarter (47 days)</u>
	12:30 Early Out, Prof Collaboration
Mar. 14	Teacher Work Day
Apr. 16	12:30 Early Out, Prof Collaboration
Apr. 17 through Apr. 21	Easter Break
May 21	School Term Ends, 12:30 p.m.
	<u>Last Day of 4th Quarter (45 days)</u>
May 22	Teacher Work Day
May 26	Memorial Day

174 Student School Days
185 Teacher Contract Days

Make-Up Schedule for Missed School Days

1 st Day	May 22	5 th Day	May 29
2 nd Day	May 23	6 th Day	May 30
3 rd Day	May 27	7 th Day	June 2
4 th Day	May 28	8 th Day	June 3

Summer School Begins June 5, 2014

January 2014

M	Tu	W	Th	F
6	7	8	9	10
13	14	15	16	17
	21	22	23	24
27	28	29	30	31

February 2014

M	Tu	W	Th	F
3	4	5	6	7
10	11	12	13	14
	18	19	20	21
24	25	26	27	28

March 2014

M	Tu	W	Th	F
3	4	5	6	7
10	11	12	13	
17	18	19	20	21
24	25	26	27	28
31				

April 2014

M	Tu	W	Th	F
	1	2	3	4
7	8	9	10	11
14	15	16		
	22	23	24	25
28	29	30		

May 2014

M	Tu	W	Th	F
			1	2
5	6	7	8	9
12	13	14	15	16
19	20	21		23
	27	28	29	30

June 2014

M	Tu	W	Th	F
2	3	4	5	6

CAMDENTON R-III SCHOOL DISTRICT OPTION 2

No Students

Early Out/Collaboration

Teacher Work Days

Early Out/Vacation

Student School Days

August 2013

M	Tu	W	Th	F
			4	2
5	6	7	8	■
■	■	■	15	16
19	20	21	22	23
26	27	28	29	30

September 2013

M	Tu	W	Th	F
■	3	4	5	6
9	10	11	12	■
16	17	18	19	20
23	24	25	26	27
30				

October 2013

M	Tu	W	Th	F
	1	2	3	4
7	8	9	10	11
14	15	16	17	■
21	22	23	24	25
28	29	30	31	

November 2013

M	Tu	W	Th	F
				■
4	5	6	7	8
11	12	13	14	■
18	19	20	21	22
25	26	■	■	■

December 2013

M	Tu	W	Th	F
2	3	4	5	6
9	10	11	12	13
16	17	18	19	20
■	■	■	■	■
■	■			

Schedule

- Aug. ... New Teacher Orientation
- Aug. 9, 12, 13, 14 Teacher Work Days
- Aug. ... Secondary Meet the Teacher Night
- Aug. ... Elementary Meet the Teacher Night
- Aug. 15 SCHOOL BEGINS
- Sept. 2 Labor Day – No School
- Sept. 13 Professional Development/Collaboration
- Sept. 25 2:00 Early Out, Professional Collaboration
- Oct. 4 Homecoming
- Oct. 9 2:00 Early Out, Professional Collaboration
- Oct. 17 Last Day of 1st Quarter (44 days)
- Oct. 18 Teacher Work Day
- Oct. 24 & 29 Elem. & Intermediate Parent/Teacher Conferences 4-8:00 p.m.
- Oct. 22 & 29 MS & HS Parent/Teacher Conferences 4-8:00 p.m.
- Oct. 30 2:00 Early Out, Professional Collaboration
- Nov. 1 NO SCHOOL
- Nov. 15 Professional Development/Collaboration
- Nov. 27-29 Thanksgiving Break
- Dec. 11 2:00 Early Out, Professional Collaboration
- Dec. 20 Christmas Vacation Begins at 12:30 p.m.
- Dec. 23 – Jan. 3 Last Day of 2nd Quarter (40 days) Christmas Vacation
- Jan. 6 Teacher Work Day
- Jan. 7 School Resumes
- Jan. 15 2:00 Early Out, Professional Collaboration
- Jan. 20 MLK, Jr. Day – No School
- Jan. 29 2:00 Early Out, Professional Collaboration
- Feb. 12 2:00 Early Out, Professional Collaboration
- Feb. 17 Presidents' Day – No School
- Feb. 26 2:00 Early Out, Professional Collaboration
- March 13 Last Day of 3rd Quarter (46 days) Teacher Work Day
- March 14 2:00 Early Out, Professional Collaboration
- March 26 2:00 Early Out, Professional Collaboration
- April 9 Easter Break
- April 17-21 2:00 Early Out, Professional Collaboration
- April 30 School Term Ends, 12:30 p.m.
- May 20 Last Day of 4th Quarter (44 days) Teacher Work Day
- May 21 Memorial Day

174 Student School Days
185 Teacher Contract Days

Make-Up Schedule for Missed School Days

- | | | | |
|---------------------|--------|---------------------|--------|
| 1 st Day | May 21 | 5 th Day | May 28 |
| 2 nd Day | May 22 | 6 th Day | May 29 |
| 3 rd Day | May 23 | 7 th Day | May 30 |
| 4 th Day | May 27 | 8 th Day | June 2 |

Summer School Begins June , 2014

January 2014

M	Tu	W	Th	F
		■	■	■
■	7	8	9	10
13	14	15	16	17
■	21	22	23	24
27	28	29	30	31

February 2014

M	Tu	W	Th	F
3	4	5	6	7
10	11	12	13	14
■	18	19	20	21
24	25	26	27	28

March 2014

M	Tu	W	Th	F
3	4	5	6	7
10	11	12	13	■
17	18	19	20	21
24	25	26	27	28
31				

April 2014

M	Tu	W	Th	F
	1	2	3	4
7	8	9	10	11
14	15	16	■	■
■	22	23	24	25
28	29	30		

May 2014

M	Tu	W	Th	F
			1	2
5	6	7	8	9
12	13	14	15	16
19	20	■	22	23
■	27	28	29	30

June 2014

M	Tu	W	Th	F
2	3	4	5	6

CAMDENTON R-III SCHOOL DISTRICT OPTION 3

No Students

Early Out/Collaboration

No School

Early Out/Vacation

Student School Days

August 2013

M	Tu	W	Th	F
			1	2
5	6	7	8	9
12	13	14	15	16
19	20	21	22	23
26	27	28	29	30

September 2013

M	Tu	W	Th	F
1	2	3	4	5
8	9	10	11	12
15	16	17	18	19
22	23	24	25	26
29	30			

October 2013

M	Tu	W	Th	F
	1	2	3	4
7	8	9	10	11
14	15	16	17	18
21	22	23	24	25
28	29	30	31	

November 2013

M	Tu	W	Th	F
				1
4	5	6	7	8
11	12	13	14	15
18	19	20	21	22
25	26	27	28	29

December 2013

M	Tu	W	Th	F
			1	2
5	6	7	8	9
12	13	14	15	16
19	20	21	22	23
26	27	28	29	30

Schedule

Aug. __, __, __ New Teacher Orientation
 Aug. 9, 12, 13, 14 Teacher Work Days
 Aug. __ Secondary Meet the Teacher Night
 Aug. __ Elementary Meet the Teacher Night
 Aug. 15 SCHOOL BEGINS
 Sept. 2 Labor Day – No School
 Sept. 13 Professional Development/Collaboration
 Sept. 25 2:00 Early Out, Professional Collaboration
 Oct. 4 Homecoming
 Oct. 17 2:00 Early Out, Professional Collaboration
 Oct. 18 Last Day of 1st Quarter (44 days)
 Oct. 18 Teacher Work Day
 Oct. 24 & 29 Elem. & Intermediate Parent/Teacher Conferences 4-8:00 p.m.
 Oct. 22 & 29 MS & HS Parent/Teacher Conferences 4-8:00 p.m.
 Oct. 31 2:00 Early Out, Professional Collaboration
 Nov. 1 NO SCHOOL
 Nov. 15 Professional Development/Collaboration
 Nov. 27-29 Thanksgiving Break
 Dec. 11 2:00 Early Out, Professional Collaboration
 Dec. 20 Christmas Vacation Begins at 12:30 p.m.
 Dec. 23 – Jan. 3 Last Day of 2nd Quarter (40 days)
 Dec. 23 Christmas Vacation
 Jan. 6 Teacher Work Day
 Jan. 7 School Resumes
 Jan. 17 2:00 Early Out, Professional Collaboration
 Jan. 20 MLK, Jr. Day – No School
 Jan. 29 2:00 Early Out, Professional Collaboration
 Feb. 12 2:00 Early Out, Professional Collaboration
 Feb. 17 Presidents' Day – No School
 Feb. 26 2:00 Early Out, Professional Collaboration
 March 13 2:00 Early Out, Professional Collaboration
 March 14 Last Day of 3rd Quarter (46 days)
 March 14 Teacher Work Day
 March 26 2:00 Early Out, Professional Collaboration
 April 16 2:00 Early Out, Professional Collaboration
 April 17-21 Easter Break
 April 30 2:00 Early Out, Professional Collaboration
 May 20 School Term Ends, 12:30 p.m.
 May 21 Last Day of 4th Quarter (44 days)
 May 21 Teacher Work Day
 May 26 Memorial Day

174 Student School Days
185 Teacher Contract Days

Make-Up Schedule for Missed School Days

1 st Day	May 21	5 th Day	May 28
2 nd Day	May 22	6 th Day	May 29
3 rd Day	May 23	7 th Day	May 30
4 th Day	May 27	8 th Day	June 2

Summer School Begins June __, 2014

January 2014

M	Tu	W	Th	F
	7	8	9	10
13	14	15	16	17
20	21	22	23	24
27	28	29	30	31

February 2014

M	Tu	W	Th	F
3	4	5	6	7
10	11	12	13	14
17	18	19	20	21
24	25	26	27	28

March 2014

M	Tu	W	Th	F
3	4	5	6	7
10	11	12	13	14
17	18	19	20	21
24	25	26	27	28
31				

April 2014

M	Tu	W	Th	F
	1	2	3	4
7	8	9	10	11
14	15	16	17	18
21	22	23	24	25
28	29	30		

May 2014

M	Tu	W	Th	F
			1	2
5	6	7	8	9
12	13	14	15	16
19	20	21	22	23
26	27	28	29	30

June 2014

M	Tu	W	Th	F
2	3	4	5	6

	Inc. Operations	Teachers	Capital Proj.	Lease Purch.	Sub Total	Debt Service	Grand Total	Medical SI Acct
Rev. Rec	9,805,645.35	851,441.63	3,813,577.68	2,066,090.34	16,536,755.00	1,515,880.26	18,052,635.26	1,923,248.19
Expend.	11,228,345.57	10,349,469.21	400,899.66	892,325.06	22,871,039.50	1,617,606.19	24,488,645.69	366,928.65
*Adjustment	1,289,710.80	2,085,487.83	68,299.95	-	3,443,498.58	300.00	3,443,798.58	785,347.96
Ending Bal	19,744,280.12	9,115,423.01	4,146,177.39	2,958,415.40	35,964,295.92	3,133,186.45	39,097,482.37	1,504,828.88
Prev. Year	17,150,107.13	8,957,910.18	5,156,015.79	2,844,992.43	34,109,025.53	2,884,146.61	36,993,172.14	1,932,663.64
YTD Interest	7,619.02	850.08	7,046.45		15,515.55	1,235.96	16,751.51	534.61
YTD Sum.								
Beg Bal	14,369,544.54	72.76	4,784,092.51	1,797,673.71	20,951,383.52	1,745,956.93	22,697,340.45	2,587,708.04
Rev Budget	19,485,147.81	22,920,108.32	808,542.32	1,357,348.68	44,571,147.13	2,143,133.00	46,714,280.13	
Rev YTD Actual	16,376,753.02	17,984,056.32	581,410.41	1,294,107.13	36,236,326.88	2,034,917.02	38,271,243.90	2,120,758.83
Exp Budget	16,296,015.78	25,459,688.81	1,884,854.00	1,487,692.00	45,128,250.59	2,220,475.00	47,348,725.59	
EXP YTD Actual	9,134,257.30	10,736,460.21	1,219,325.53	133,365.44	21,223,408.48	647,687.50	21,871,095.98	3,203,637.99
*Transfer	1,867,754.14	1,867,754.14						
*Adjustment	6.00							
Ending Bal	19,744,280.12	9,115,423.01	4,146,177.39	2,958,415.40	35,964,295.92	3,133,186.45	39,097,482.37	1,504,828.88
Bank Recon								
1st Nat'l A/P 2895	1,197,709.45							
1st Nat'l Payroll	91,314.26							
Central A/P	53,840.03							
Central Payroll	1,657,390.04							
Revolving	3,000.00							
Cred Card	14,879.83							
Escrow 0150022007	180,000.00							
Escrow 0150022008	989,202.50							
Central Debt Acct	24,888.00							
1st Nat'l Debt Acct	74,330.68							
Mosip Debt Acct	1,862,365.27							
MOSIP	32,914,289.46							
Central Lunch Acct.	34,272.85							
CD								
Grand Total	39,097,482.37							
Medical SI Acct.								1,504,828.88

*Transfer: Zero Teacher Fund

*Adjustment: Correct Opening Balance in Bank Acct 7232895

39,097,482.37 Fund Accounts
 39,097,482.37 Bank Accounts

0.00

Monthly Financial Report

	Incidental	Teachers	Capital Projects	Lease Purchase	Total Operating Funds	Debt Service	Total All Funds	Med. SI Acct
January Opening Balance	\$ 9,805,645	\$ 851,442	\$ 3,813,578	\$ 2,066,090	\$ 16,536,755	\$ 1,515,880	\$ 18,052,635	\$ 1,923,248
January								
2013 Ending Balance	\$ 19,744,280	\$ 9,115,423	\$ 4,146,177	\$ 2,958,415	\$ 35,964,295	\$ 3,133,186	\$ 39,097,481	\$ 1,504,829
2012 Ending Balance	\$ 17,150,107	\$ 8,957,910	\$ 5,156,016	\$ 2,844,992	\$ 34,109,025	\$ 2,884,147	\$ 36,993,172	\$ 1,932,664
2011 Ending Balance	\$ 15,086,399	\$ 9,588,347	\$ 5,699,082	\$ 2,648,700	\$ 33,022,528	\$ 2,603,151	\$ 35,625,679	\$ 1,242,822
2010 Ending Balance	\$ 14,677,900	\$ 9,365,286	\$ 5,226,951	\$ 1,485,953	\$ 30,756,090	\$ 2,493,210	\$ 33,249,300	\$ 1,291,255
2009 Ending Balance	\$ 15,948,883	\$ 7,975,731	\$ 3,265,760	\$ 2,625,151	\$ 29,815,525	\$ 2,361,211	\$ 32,176,736	\$ 1,750,245
2008 Ending Balance	\$ 14,975,272	\$ 7,159,742	\$ 3,250,202	\$ 2,535,064	\$ 27,920,280	\$ 2,239,046	\$ 30,159,326	\$ 1,987,175
2007 Ending Balance	\$ 14,714,637	\$ 5,022,443	\$ 2,681,574	\$ 2,089,642	\$ 24,508,296	\$ 2,154,376	\$ 26,662,672	\$ 2,719,008
2006 Ending Balance	\$ 12,391,131	\$ 5,131,411	\$ 1,648,823	\$ 2,085,684	\$ 21,257,049	\$ 2,101,462	\$ 23,358,511	\$ 2,139,117
January								
2013 Receipts	\$ 11,228,346	\$ 10,349,469	\$ 400,900	\$ 892,325	\$ 22,871,040	\$ 1,617,606	\$ 24,488,646	\$ 366,929
2012 Receipts	\$ 10,941,834	\$ 10,413,857	\$ 416,353	\$ 1,249,060	\$ 23,021,104	\$ 1,724,921	\$ 24,746,025	\$ 378,261
2011 Receipts	\$ 8,976,724	\$ 10,973,098	\$ 3,224,367	\$ 806,092	\$ 23,980,281	\$ 1,391,430	\$ 25,371,711	\$ 409,004
2010 Receipts	\$ 8,691,387	\$ 10,420,102	\$ 3,248,793	\$ 812,198	\$ 23,172,480	\$ 1,356,431	\$ 24,528,911	\$ 333,529
2009 Receipts	\$ 8,458,966	\$ 10,065,790	\$ 3,165,504	\$ 999,633	\$ 22,689,893	\$ 1,344,451	\$ 24,034,344	\$ 314,597
2008 Receipts	\$ 8,293,356	\$ 8,768,110	\$ 3,441,956	\$ 1,207,989	\$ 21,711,411	\$ 1,432,111	\$ 23,143,522	\$ 304,447
2007 Receipts	\$ 7,579,612	\$ 7,689,116	\$ 2,288,635	\$ 980,844	\$ 18,538,207	\$ 1,370,120	\$ 19,908,327	\$ 294,408
2006 Receipts	\$ 7,398,912	\$ 7,156,575	\$ 1,465,406	\$ 898,152	\$ 16,919,045	\$ 1,237,791	\$ 18,156,836	\$ 281,315
January								
2013 Expenditures	\$ 1,289,711	\$ 2,085,488	\$ 68,300	\$ -	\$ 3,443,499	\$ 300	\$ 3,443,799	\$ 785,348
2012 Expenditures	\$ 1,304,682	\$ 2,045,919	\$ 133,510	\$ -	\$ 3,484,111	\$ 600	\$ 3,484,711	\$ 393,427
2011 Expenditures	\$ 1,325,479	\$ 2,008,427	\$ 405,833	\$ -	\$ 3,739,739	\$ 600	\$ 3,740,339	\$ 348,877
2010 Expenditures	\$ 1,264,404	\$ 1,903,345	\$ 44,997	\$ 1,144,199	\$ 4,356,945	\$ 600	\$ 4,357,545	\$ 450,223
2009 Expenditures	\$ 1,147,439	\$ 1,833,124	\$ 108,535	\$ -	\$ 3,089,098	\$ 600	\$ 3,089,698	\$ 365,901
2008 Expenditures	\$ 1,127,388	\$ 1,720,608	\$ 49,070	\$ -	\$ 2,897,066	\$ 1,308	\$ 2,898,374	\$ 389,061
2007 Expenditures	\$ 857,008	\$ 1,611,335	\$ 25,198	\$ -	\$ 2,493,541	\$ 300	\$ 2,493,841	\$ 326,731
2006 Expenditures	\$ 1,067,003	\$ 1,364,071	\$ 32,525	\$ -	\$ 2,463,599	\$ 1,350	\$ 2,464,949	\$ 185,755
YTD								
2013 Receipts	\$ 16,376,753	\$ 17,984,056	\$ 581,411	\$ 1,294,107	\$ 36,236,327	\$ 2,034,918	\$ 38,271,245	\$ 2,120,759
2012 Receipts	\$ 15,410,462	\$ 17,284,004	\$ 511,140	\$ 1,533,422	\$ 34,739,028	\$ 2,106,792	\$ 36,845,820	\$ 2,114,897
2011 Receipts	\$ 13,231,206	\$ 18,412,128	\$ 4,242,291	\$ 1,060,574	\$ 36,946,199	\$ 1,715,675	\$ 38,661,874	\$ 2,220,885
2010 Receipts	\$ 12,832,380	\$ 17,991,017	\$ 4,113,663	\$ 1,028,415	\$ 35,965,475	\$ 1,681,555	\$ 37,647,030	\$ 2,048,227
2009 Receipts	\$ 12,575,079	\$ 17,890,908	\$ 3,814,520	\$ 1,204,585	\$ 35,485,092	\$ 1,639,194	\$ 37,124,286	\$ 1,912,933
2008 Receipts	\$ 12,193,134	\$ 16,515,565	\$ 4,177,259	\$ 1,466,338	\$ 34,352,296	\$ 1,772,800	\$ 36,125,096	\$ 1,659,277
2007 Receipts	\$ 12,732,350	\$ 13,672,949	\$ 3,058,433	\$ 1,203,615	\$ 30,667,347	\$ 1,683,872	\$ 32,351,219	\$ 1,662,549
2006 Receipts	\$ 13,931,435	\$ 12,412,351	\$ 1,891,216	\$ 1,159,133	\$ 29,394,135	\$ 1,589,572	\$ 30,983,707	\$ 1,671,115

Financial Summary – January 2013

February 11, 2013

To: Board of Education

- January 2013 ending balances were \$2,104,310 more than January 2012.
- January 2013 total receipts were \$257,380 less than January 2012.
- January 2013 total expenditures were \$40,913 less than January 2012.
- YTD total receipts are up \$1,425,423 as compared to this time last year.
- YTD total expenditures are up \$710,925 as compared to this time last year.
- YTD total local receipts are up \$810,851.
 - Prop C sales tax is up \$89,030.
 - Earnings on investments are up \$3,809.
 - Current taxes are up \$551,767.
 - Delinquent taxes are up \$6,596.
- YTD county receipts are down \$108,384. We have not as of yet received Fines and Forfeitures this month. We also have not received State Assessed Railroad and Utilities.
- YTD total state receipts are up \$342,363.
 - Basic Formula monies are up \$279,502.
 - Classroom Trust Fund is up \$4,525.
- YTD Federal receipts are up \$397,301.
 - This is due to an increase in 21st Century Funds.
 - January 2013 medical account balances are down \$427,835.

Pledged Securities

Bank	Deposit Balance	FDIC Insurance	Balance	Securities Pledged	Amt Under/Over Collateralized
US Bank	\$1,504,828.88	\$250,000.00	\$1,254,828.88	\$2,000,000.00	\$745,171.12(Over)
First National Bank	\$1,378,234.22	\$250,000.00	\$1,128,234.22	\$4,307,199.00	\$3,178,964.78(Over)
Central Bank	\$1,773,390.92	\$250,000.00	\$1,523,390.92	\$2,006,785.02	\$483,394.10(Over)

**2012-2013 MONTHLY
FINANCIAL STATEMENT**

JULY 2012 FINANCIAL STATEMENT Medical Self-Insurance Account					
Beginning Bal.	Revenues Received		Expenditures		Ending Bal.
	Premiums	\$100,299.53	Fixed Premium	\$71,132.59	
	COBRA	\$0.00	Claims	\$283,611.71	
	Interest	\$105.75	Overpay/Refund	\$0.00	
	Reimb/Void Ck.	\$9,158.80	Sv. Chg./NSF Chks	\$126.70	
	Stop Loss Reimb.	\$0.00	ERRP Adm. fees	\$0.00	
\$2,587,708.04	\$109,564.08		\$354,871.00		\$2,342,401.12

AUGUST 2012 FINANCIAL STATEMENT Medical Self-Insurance Account					
Beginning Bal.	Revenues Received		Expenditures		Ending Bal.
	Premiums	\$111,982.17	Fixed Premium	\$71,208.41	
	COBRA	\$0.00	Claims	\$408,976.99	
	Interest	\$92.43	Overpay/Refund	\$0.00	
	Reimb/Void Ck.	\$0.00	Sv. Chg./NSF Chks	\$98.56	
	Stop Loss Reimb.	\$46,309.19	ERRP Adm. fees	\$0.00	
\$2,342,401.12	\$158,383.79		\$480,283.96		\$2,020,500.95

SEPTEMBER 2012 FINANCIAL STATEMENT Medical Self-Insurance Account					
Beginning Bal.	Revenues Received		Expenditures		Ending Bal.
	Premiums	\$367,767.90	Fixed Premium	\$71,799.50	
	COBRA	\$0.00	Claims	\$297,969.21	
	Interest	\$84.01	Overpay/Refund	\$0.00	
	Reimb/Void Ck.	\$0.00	Sv. Chg./NSF Chks	\$125.40	
	Stop Loss Reimb.	\$0.00	ERRP Adm. fees	\$0.00	
\$2,020,500.95	\$367,851.91		\$369,894.11		\$2,018,458.75

OCTOBER 2012 FINANCIAL STATEMENT Medical Self-Insurance Account					
Beginning Bal.	Revenues Received		Expenditures		Ending Bal.
	Premiums	\$368,643.14	Fixed Premium	\$71,875.32	
	COBRA	\$2,768.68	Claims	\$369,519.56	
	Interest	\$87.51	Overpay/Refund	\$3,029.76	
	Reimb/Void Ck.	\$0.00	Sv. Chg./NSF Chks	\$355.40	
	Stop Loss Reimb.	\$0.00	ERRP Adm. fees	\$0.00	
\$2,018,458.75	\$371,499.33		\$444,980.04		\$1,944,978.04

NOVEMBER 2012 FINANCIAL STATEMENT Medical Self-Insurance Account					
Beginning Bal.	Revenues Received		Expenditures		Ending Bal.
	Premiums	\$370,893.14	Fixed Premium	\$72,378.52	
	COBRA	\$0.00	Claims	\$281,331.80	
	Interest	\$81.99	Overpay/Refund	\$0.00	
	Reimb/Void Ck.	\$8,439.99	Sv. Chg./NSF Chks	\$138.25	
	Stop Loss Reimb.	\$0.00	ERRP Adm. fees	\$0.00	
\$1,944,978.04	\$379,415.12		\$353,848.57		\$1,970,544.59

DECEMBER 2012 FINANCIAL STATEMENT Medical Self-Insurance Account					
Beginning Bal.	Revenues Received		Expenditures		Ending Bal.
	Premiums	\$370,062.79	Fixed Premium	\$72,893.79	
	COBRA	\$0.00	Claims	\$344,447.92	
	Interest	\$82.52	Overpay/Refund	\$0.00	
	Reimb/Void Ck.	\$0.00	Sv. Chg./NSF Chks	\$100.40	
	Stop Loss Reimb.	\$0.00	ERRP Adm. fees	\$0.00	
\$1,970,544.59	\$370,145.71		\$417,442.11		\$1,923,248.19

Corrected a \$44 error on premiums on November.

JANUARY 2013 FINANCIAL STATEMENT Medical Self-Insurance Account					
Beginning Bal.	Revenues Received		Expenditures		Ending Bal.
	Premiums	\$366,856.74	Fixed Premium	\$144,641.61	
	COBRA	\$0.00	Claims	\$640,607.35	
	Interest	\$71.91	Overpay/Refund	\$0.00	
	Reimb/Void Ck.	\$0.00	Sv. Chg./NSF Chks	\$99.00	
	Stop Loss Reimb.	\$0.00	ERRP Adm. fees	\$0.00	
\$1,923,248.19	\$366,928.65		\$785,347.96		\$1,504,828.88

February Fixed Premium of \$72,314.77 was taken out of January by mistake. None will be taken out in February.

2012-2013 School Year-to-Date (July 1 - Jan. 31)			
Premiums	\$2,056,505.41	Fixed Premium	\$575,929.74
COBRA	\$2,768.68	Claims	\$2,626,464.54
Interest	\$606.52	Overpay/Refund	\$3,029.76
Reimb/Void Ck.	\$17,598.79	Sv. Chg./NSF Chks	\$1,243.71
Stop Loss Reimb.	\$46,309.19	ERRP Adm. fees	\$0.00
Revenue Totals	\$2,123,788.59	Expenditure Totals	\$3,206,667.75

CLAIMS	12-13 Med-Pay	11-12 Med-Pay	10-11 Med-Pay	09-10 Med-Pay	08-09 Med-Pay	07-08 Med-Pay	06-07 Med-Pay	05-06 Med-Pay	04-05 Med-Pay	03-04 Med-Pay
July	\$283,611.71	\$168,985.39	\$287,494.22	\$427,698.06	\$400,005.10	\$375,122.92	\$170,342.46	\$321,334.42	\$133,185.69	\$ 27,756.09
August	\$408,976.99	\$278,743.46	\$350,511.96	\$499,214.99	\$325,691.66	\$325,523.23	\$292,877.95	\$193,063.00	\$159,151.40	\$123,263.78
September	\$297,969.21	\$196,355.63	\$281,166.96	\$159,283.29	\$227,522.56	\$171,598.80	\$177,547.88	\$208,795.27	\$160,373.47	\$329,978.42
October	\$369,519.56	\$153,415.65	\$305,672.28	\$270,695.04	\$188,889.41	\$280,051.14	\$203,034.06	\$201,555.02	\$138,418.35	\$178,931.74
November	\$281,331.80	\$230,438.11	\$287,238.73	\$228,018.13	\$496,053.93	\$262,066.34	\$173,262.57	\$172,064.09	\$149,008.84	\$259,307.29
December	\$344,447.92	\$263,849.58	\$253,818.66	\$315,072.19	\$355,010.03	\$224,715.26	\$227,712.73	\$203,068.55	\$192,828.60	\$245,001.81
January	\$640,607.35	\$324,307.75	\$295,383.46	\$401,218.11	\$323,193.62	\$347,811.13	\$289,925.16	\$150,889.30	\$600,356.91*	\$200,497.18
February		\$309,115.12	\$158,984.63	\$382,084.19	\$288,437.52	\$223,255.51	\$170,715.55	\$238,954.33	\$202,519.30	\$155,762.54
March		\$288,183.00	\$645,113.36	\$355,349.54	\$261,119.46	\$327,659.47	\$165,512.88	\$150,227.03	\$213,795.04	\$151,813.65
April		\$209,003.76	\$250,777.23	\$623,165.38	\$611,927.60	\$304,963.31	\$155,347.87	\$112,346.51	\$145,756.34	\$169,280.63
May		\$293,487.96	\$210,957.88	\$330,633.24	\$281,544.76	\$195,502.35	\$161,885.14	\$198,171.03	\$326,388.68	\$125,881.05
June		\$394,830.02	\$279,578.73	\$570,849.67	\$627,090.46	\$347,913.00	\$166,397.33	\$210,294.04	\$307,724.92	\$238,590.03

*04-05 Jan. included \$330,159.26 which was pd by Stop Loss. Claims were \$270,197.65 that we pd.

ENDING BAL.	12-13 Med-Pay	11-12 Med-Pay	10-11 Med-Pay	09-10 Med-Pay	08-09 Med-Pay	07-08 Med-Pay	06-07 Med-Pay	05-06 Med-Pay	04-05 Med-Pay	03-04 Med-Pay
July	\$2,342,401.12	\$1,778,463.34	\$1,290,123.31	\$1,519,208.40	\$2,219,251.64	\$2,247,901.71	\$2,743,175.51	\$1,990,479.12	\$1,405,052.13	\$732,281.15
August	\$2,020,500.95	\$1,555,840.66	\$1,068,654.63	\$1,084,739.74	\$1,943,307.87	\$1,972,318.12	\$2,516,667.11	\$1,844,329.10	\$1,293,874.89	\$652,166.64
September	\$2,018,458.75	\$1,656,465.73	\$1,084,561.66	\$1,223,531.50	\$1,983,836.00	\$2,061,260.27	\$2,591,203.84	\$1,876,376.20	\$1,412,907.63	\$604,225.16
October	\$1,944,978.04	\$1,849,342.69	\$1,086,260.23	\$1,380,986.96	\$2,069,605.93	\$2,040,015.95	\$2,647,375.12	\$1,922,364.82	\$1,546,279.68	\$752,563.91
November	\$1,970,544.15	\$1,916,054.51	\$1,118,232.16	\$1,437,355.85	\$1,881,910.94	\$2,035,990.32	\$2,725,325.48	\$1,997,768.23	\$1,587,513.47	\$727,790.43
December	\$1,923,248.19	\$1,947,829.81	\$1,182,695.03	\$1,407,949.09	\$1,801,549.29	\$2,071,788.95	\$2,751,330.33	\$2,043,557.19	\$1,641,944.28	\$719,625.14
January	\$1,504,828.88	\$1,932,663.64	\$1,242,822.18	\$1,291,254.88	\$1,750,245.27	\$1,987,174.73	\$2,719,007.58	\$2,139,116.83	\$1,621,403.72	\$752,419.67
February		\$1,921,673.92	\$1,409,517.93	\$1,192,724.07	\$1,776,115.70	\$1,939,554.54	\$2,803,867.63	\$2,148,965.93	\$1,668,769.75	\$827,471.99
March		\$1,943,934.31	\$1,081,226.00	\$1,222,988.32	\$1,860,988.26	\$1,988,239.08	\$2,890,136.79	\$2,245,745.08	\$1,735,650.63	\$914,136.08
April		\$2,040,436.96	\$1,272,477.12	\$1,069,996.72	\$1,521,756.36	\$1,991,081.99	\$2,984,645.73	\$2,384,039.28	\$1,861,600.57	\$975,544.29
May		\$1,979,020.73	\$1,318,582.01	\$1,204,401.70	\$1,545,804.73	\$2,068,391.30	\$3,077,731.48	\$2,436,022.30	\$1,796,353.55	\$1,088,051.57
June		\$2,587,708.04	\$1,861,584.09	\$1,458,538.89	\$1,883,552.42	\$2,448,550.87	\$3,597,945.49*	\$2,848,470.13	\$2,163,214.87	\$1,503,987.81

*July 1, 2007 we transferred \$1,000,000.00 out of Medical Trust Fund per Ron Hendricks. February 2007 - Classified \$100,920.00 was for February was not deposited til March.

**Camdenton R-III
Flex Benefit Account
First National Bank**

Account # 7228968

Balance 1/01/2013 **\$41,581.05**

Deposits

\$21,231.90	Premium
\$145.05	Refund
\$15.83	Refund
\$4.33	Interest

Total Deposits **\$21,397.11**

Withdrawals

\$ 1,080.80	
1,674.55	
1,287.37	
4,614.31	
240.00	
1,010.04	
2,128.77	
654.45	
1,281.55	
553.39	
1,277.46	
1,336.02	Claims

Total Withdrawals **\$17,138.71**

Balance 1/31/2013 **\$45,839.45**

**SCHOOL RESOURCE OFFICERS
YEAR END SUMMARY OF ACTIVITY
January through December 2012**

SRO INVESTIGATIONS, ENFORCEMENT, & ARRESTS ON CAMPUS

Category	2011	2012	2013	2014	2015	2016	2017	2018	2019	2020	2021	2022	2023	2024	2025	2026	2027	2028	2029	2030	Total	
Assault		1	8	1	2																-9	
Behavior Injuries																						-3
Burglary on Campus			2																			+2
Disorderly Conduct		5				3																+1
Drugs		3-under Influence	5			1																-20
EDP		1				5	14															+17
Educational Neglect				1																		No/Chg
Ex Parte Violation			1																			+1
False Bomb Threat			1																			+1
Harassment		2					10															-7
Indecent Exposure			1																			+1
Minor In Possession		2																				-8
Missing Student																						No/Chg
Motor Vehicle Crash					2	Pri-Prop 17																+10
Peace Disturbance		11	7	1																		+2
Pedestrian Check							3															+1
Property Damage		1	1			1	2															+1
Sexual Misconduct		1	1	1	1																	+2
Suspicious Activity						1																-2
Tamper With Vehicle						1																+1
Terrorist Threats			2																			+2
Theft			5	1	4	8																-3
Threats		2			2	11																-6
Tobacco Violation																						No/Chg
Trespass	2	1				1																+3
Truancy		4	3		1	4																-3
Ungovernable Behavior																						-5
Vandalism																						No/Chg
Warrant Arrest on School Prop																						-1
Weapon Possession		1	1																			+1
TOTAL																						

SRO EMERGENCY CALLS FOR SERVICE, TRAFFIC RELATED ISSUES, & PARTICIPATION IN PREPAREDNESS DRILLS ON CAMPUS

Category	2011	2012	2013	2014	2015	2016	2017	2018	2019	2020	2021	2022	2023	2024	2025	2026	2027	2028	2029	2030	Total	
Fire Alarm	Fire Located	1																				TOTAL
Activate School Incident Action Plans	Actual Event	1 Bomb Threat High School																				TOTAL
Medical Call	Assess Only No Transport	0																				TOTAL
Traffic Issues and/or Citations	Warnings	32																				TOTAL
Handicap Parking/ Fire Lane Violations	Warnings	18																				TOTAL
Parking Violations	Warnings	0																				TOTAL

SRO MISCELLANEOUS ACTIVITY & SERVICES PROVIDED

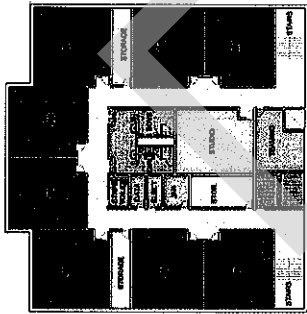
Assist School Official - Ungovernable Behavior/Rate Student or Parent
Check Student for Prohibited Item (Cigarettes, Drugs, Weapons, etc.)
Conflict Mediation between Students
Lock Outs & Motorist Assist
Research Assistance for Students
Escort or Transport Student or Staff For School
Child Custody Dispute/ Invest/Mediation on Campus
Total

SRO'S ASSISTING WITH INVESTIGATION OR ASSIST ANOTHER AGENCY WITH INVESTIGATION INVOLVING STUDENT/STAFF

CAMDENTON POLICE DEPARTMENT
CAMDEN COUNTY SHERIFF DEPARTMENT
DIVISION OF FAMILY SERVICES/CHILDREN'S DIVISION
MORGAN COUNTY SHERIFF DEPARTMENT
LNN CREEK PD
JUVENILE CENTER
ARKANSAS STATE PATROL
OSAGE BEACH POLICE DEPARTMENT
TOTAL

SRO PRESENTATIONS AND SPEAKING ENGAGEMENTS TO VARIOUS GROUPS

2-1-12	Hawthorn- General Laws Discussion	25
2-6-12	Hawthorn- General Laws Discussion	25
2-9-12	Leadership Camden County- Discuss SRO Role in School Safety	25
2-22-12	High School- Seatbelt Awareness During Lunch	200
2-23-12	High School- Seatbelt Awareness Operation on the Parking Lot	200
2-27/2-29-12	High School- Self Defense Intro	25
3-8-12	Hawthorn- Student Tour of Police Department	25
5-9-12	High School- Dacudrama	25
9-13-12	Dogwood- Bullying and Respect	25
9-18-12	Dogwood- Personal Safety and Awareness	25
9-19-12	Dogwood- Personal Safety and Awareness	25
9-20-12	Dogwood- Personal Safety and Awareness	25
9-21-12	Dogwood- Personal Safety and Awareness	25
9-24-12	Middle School- Drug Awareness	25
11-7-12	Hawthorn- General Laws Discussion	25
11-27/1-30-12	High School- Self Defense Intro	25



81,845 SF

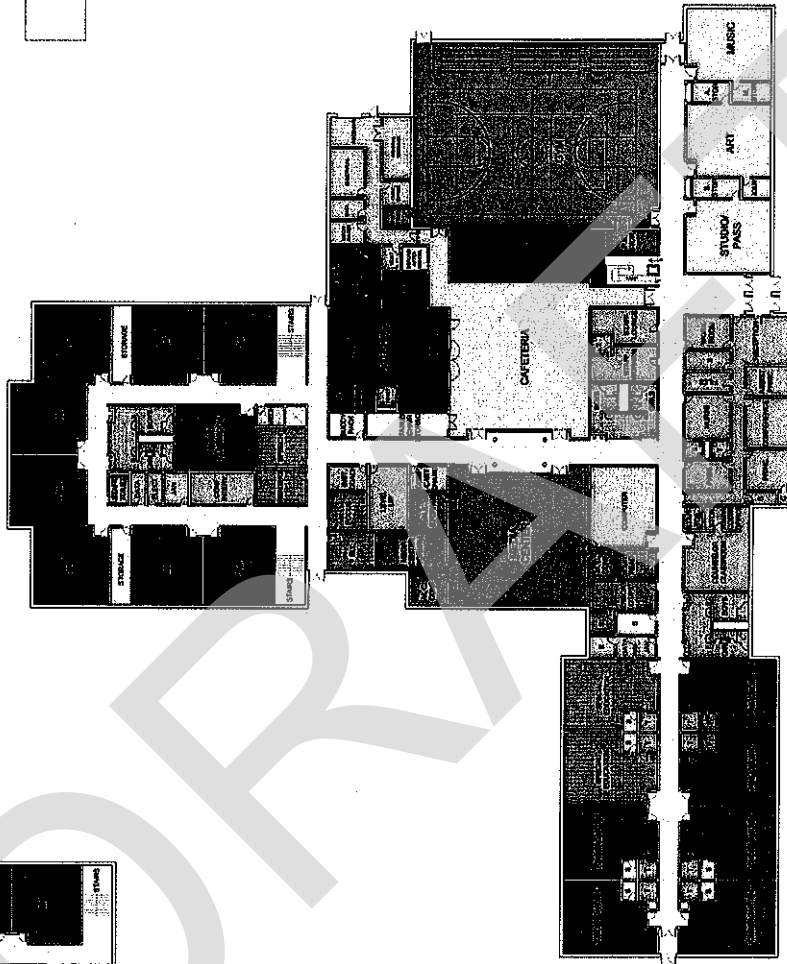


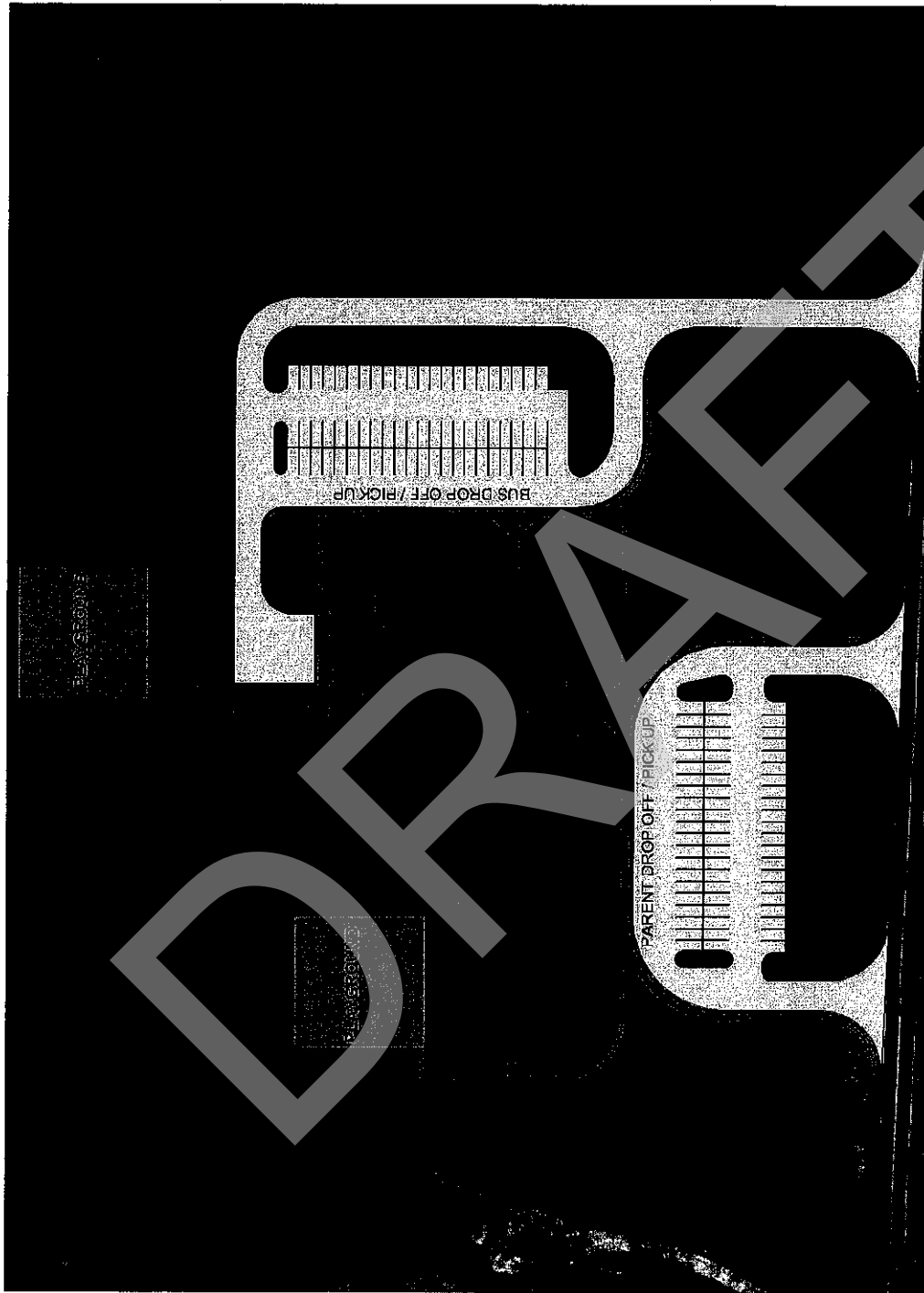
TABLE 5.1

OSAGE BEACH ELEMENTARY

2.11.13



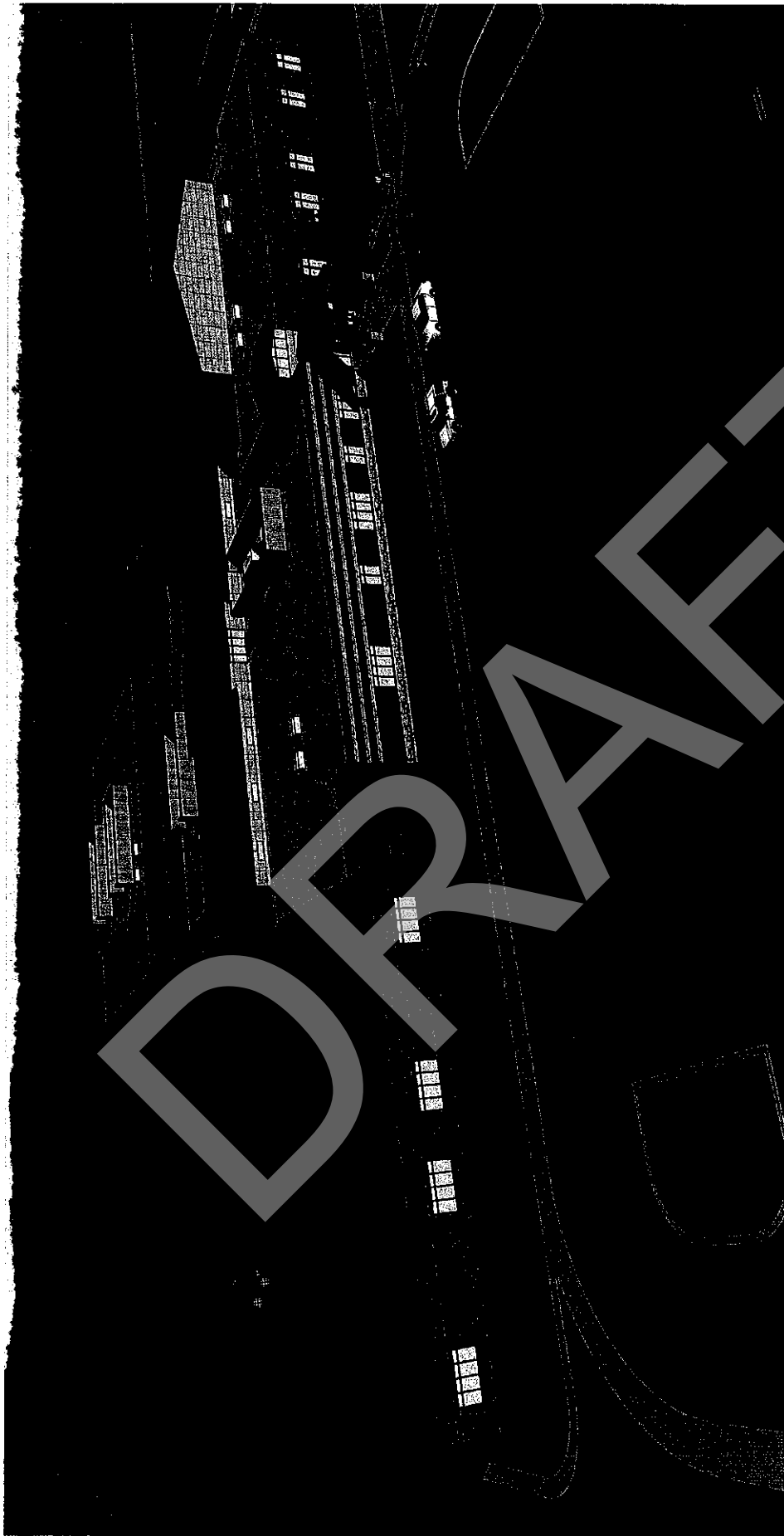
ACI Frangkiser
Hutchens
ARCHITECTS PLANNERS INTERIOR DESIGNERS



OSAGE BEACH ELEMENTARY

2.11.13



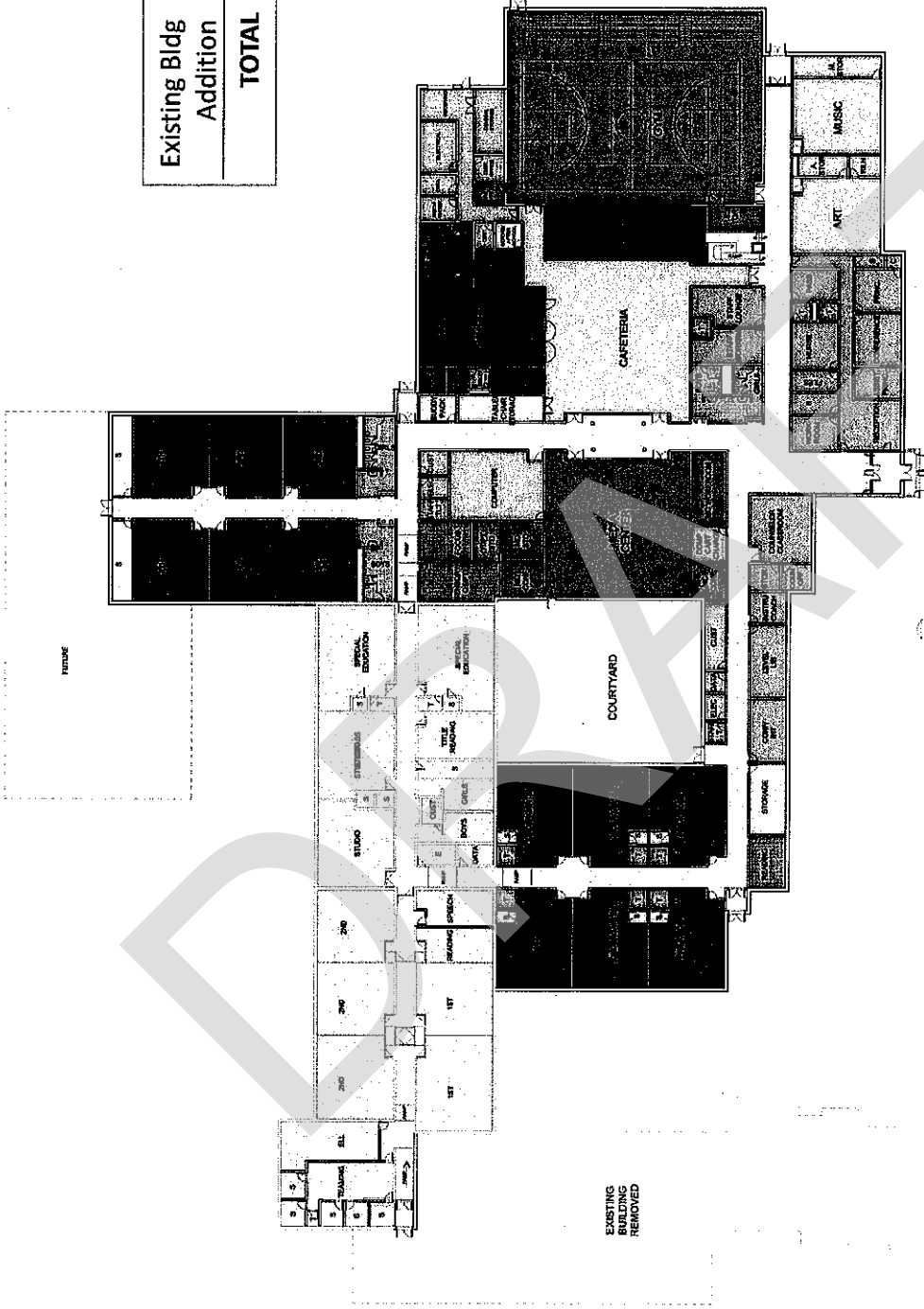


OSAGE BEACH ELEMENTARY

2.11.13



Existing Bldg	16,497 SF
Addition	59,304 SF
TOTAL	75,801 SF

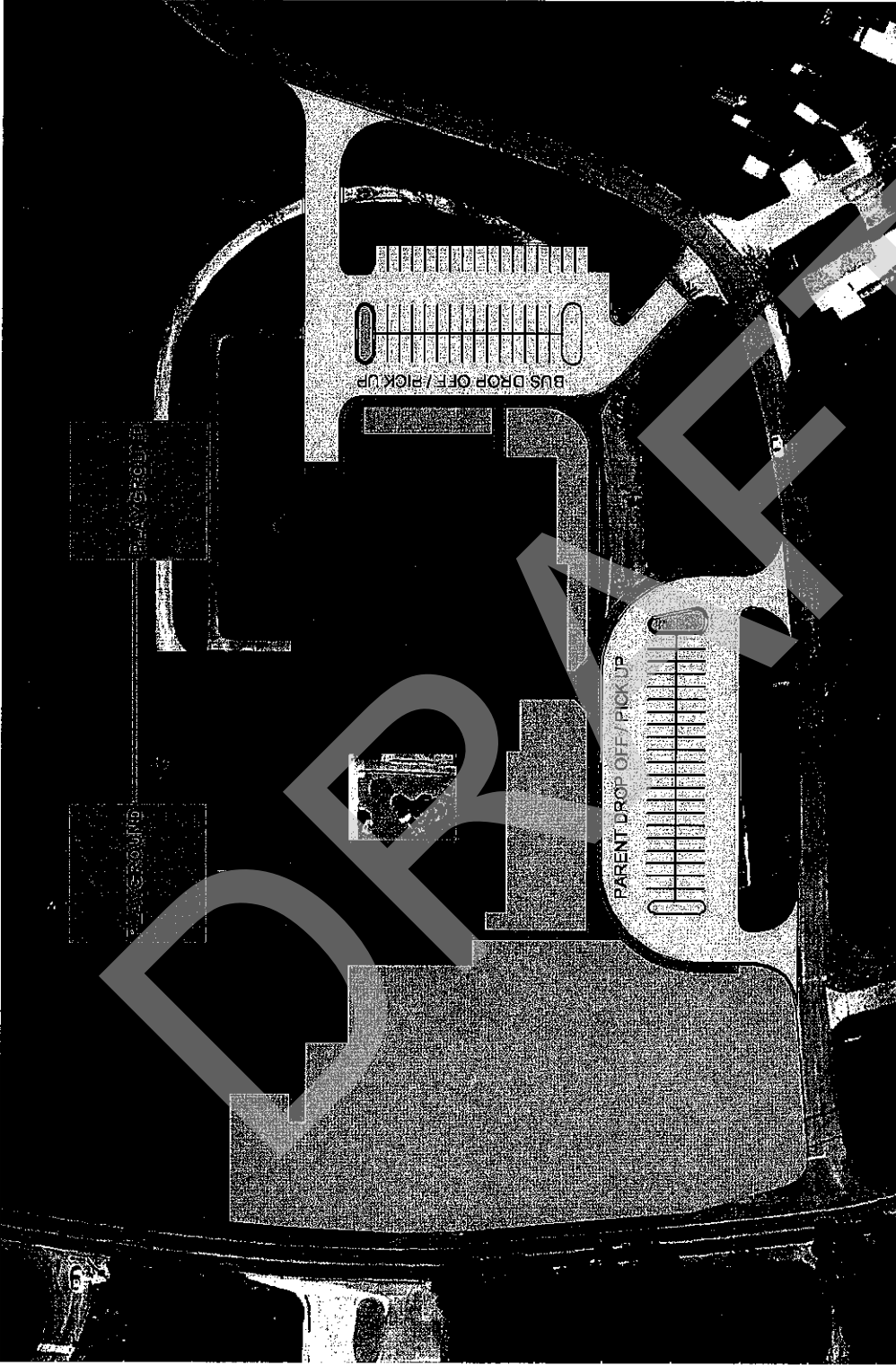


HURRICANE DECK ELEMENTARY

2.11.13



ACI **Frangkiser**
Hutchens
ARCHITECTS PLANNERS INTERIOR DESIGNERS



HURRICANE DECK ELEMENTARY

2.11.13





HURRICANE DECK ELEMENTARY

2.11.13



ACI Frangkiser
Hutchens
ARCHITECTS • PLANNERS • INTERIOR DESIGNERS

**CAMDENTON R-III SCHOOL DISTRICT
 PRELIMINARY COST ESTIMATE
 BIDDING 2013**

February 11, 2013

1. New K-4 Osage Beach Elementary

a. 4 Section with separate Cafeteria and Gymnasium and 2 Classrooms for Early Childhood 81,845 s.f. @ \$172	\$14,077,340	
b. Site excavation and Utilities	<u>1,500,000</u>	
c. Subtotal	\$15,577,340	
d. Design and Construction Contingency (10%)	1,557,734	
e. A/E Fee, Survey, Testing, Printing (10%)	1,557,734	
f. Furniture and Equipment (10%)	<u>1,557,734</u>	
g. Total		\$20,250,542

Note: Cost of Land not Included in Cost Estimate

2. Addition and Renovation Hurricane Deck Elementary

a. 3 Section with separate Cafeteria and Gymnasium and 2 Classrooms for Early Childhood		
1) Addition 59,304 s.f. @ \$172	\$10,200,288	
2) Renovation 16,497 s.f. @ \$20	329,940	
3) Demolition 13,966 s.f. @ \$2.50	<u>34,915</u>	
b. Subtotal	\$10,565,143	
c. Design and Construction Contingency (10%)	1,056,514	
d. A/E Fee, Survey, Testing, Printing (10%)	1,056,514	
e. Furniture and Equipment (10%)	<u>1,056,514</u>	
f. Total		\$13,734,685

3. Total **\$33,985,227**

PERSONNEL NEEDS TO IMPLEMENT 2013-2014 EDUCATIONAL PROGRAM

School	Enrollment	Teachers	Actual Average Class Size	Projected Enrollment	Add Teachers	Projected Average Class Size	Increase or Decrease
*Kindergarten	252	13	19	246	13	19	0
1st Grade	241	11	22	252	13	19	2
2nd Grade	247	11	22	241	11	22	0
Building Total	740	35	21	739	37	20	2
3rd Grade	249	11	23	247	11	22	0
4th Grade	231	10	23	249	11	23	1
Building Total	480	21	23	486	22	23	0
5th Grade	312	13	24	294	12	25	-1
6th Grade	332	13	26	312	13	24	0
Building Total	644	26	25	606	25	24	-1
*Kindergarten	35	2	18	28	2	14	0
1st Grade	29	2	15	35	2	18	0
2nd Grade	27	1	27	29	2	15	1
3rd Grade	28	2	14	27	2	14	0
4th Grade	25	2	13	28	2	14	0
Building Total	144	9	16	147	10	15	1
*Kindergarten	51	2	25	52	3	17	1
1st Grade	31	2	16	51	3	22	1
2nd Grade	49	3	16	31	2	19	-1
3rd Grade	29	2	15	49	3	21	1
4th Grade	38	2	19	29	2	21	0
Building Total	198	11	18	212	13	21	2
Elem Total	2,206	101	22	2,200	106	21	5

* Dogwood, Osage Beach, and Hurricane Deck kindergarten estimated enrollment based on 3-year average.

Personnel Needs to Implement 2013-2014

	2012-2013 Actual Staff	2013-2014 Staff Projected	Increase/Decrease
Administrators	8.0	8.0	-
Counselors (2 Pope)	6.2	8.0	+1.8
Librarians	6.0	6.0	-
Regular Classroom Teachers	101.0	106.0	5
Reading Specialists	11.0	11.0	-
Literacy Coaches	2.4	2.4	-
Gifted	4.0	4.0	-
Elem. District Music	4.0	4.0	-
Elem. District P.E.	4.0	4.0	-
Elem. District Art	4.0	4.0	-
I.S.S. Supervisor	0.5	0.5	-
	151.1	157.9	

Elementary Notes:

COUNSELORS: 1 FTE at OBE / 1 FTE split 3 days at HD and 2 days at HAW. Is there a need for additional counselors at the secondary level?

POSSIBLY Teacher Leader for Reading Recovery?

INSTRUCTIONAL COACHES??

- > All actual class size averages in this report are based on the December 1, 2012 attendance numbers.
- > All 2012-2013 enrollment projections in this report are based on December 1, 2012 attendance numbers without a percent increase.
- > Elementary class sizes do not reflect students who are pulled out for special education, reading, or gifted.
- > Most recommended number of sections for elementary grades is based on the District Class Size Recommendation.
- > Kindergarten enrollments are projected from the last 3 years' average enrollment.

Personnel Needs to Implement 2013-2014

School	2012-2013 Staff Actual	2013-2014 Staff Projected	Increase/Decrease Projected
Administrators	2	2	-
Counselors	2	2	-
Librarian	1	1	-
*Regular Classroom Teachers	36.53	36.53	?
Reading Specialist	2	2	-
Alternative School Program	1	1	-
Gifted	1	1	-
Special Education (includes Process Coord)	9	9	-
ISS Supervisor	0.5	0.5	-
Total	55.03	55.03	0

*Includes art, music, PE, & French
Go back to split teams? 4 teachers to go
back to elem or up to HS for 2 years?

Grade	Projected 2012-2013	Actual 2012-2013	Projected 2012 - 2013
7 th	300	296	332
8 th	322	326	296
Total	622	622	628

> 2008-2009 projected enrollment – 686 actual enrollment – 690 (+4)
 > 2009-2010 projected enrollment – 687 actual enrollment – 681 (-6)
 > 2010-2011 projected enrollment – 602 actual enrollment – 634 (+32)
 > 2011-2012 projected enrollment – 613 actual enrollment – 622 (-9)
 > All actual numbers for 2012-2013 and projected numbers for 2013-2014 are based on December 1, 2012 attendance numbers.
 > Projections include special education students

	2011-2012 Actual Average Class Size	2012-2013 Actual Average Class Size	2013-2014 Projected Class Size
7th Grade			
Academics	20.6 (60 sections)	18.35 (60 sections)	
Electives	22.5 (32 sections)	25.6 (41 sections)	
PE			
Health			
PE/Health	21.4 (15 sections)	19.6 (15 sections)	
8th Grade			
Academics	18.4 (60 sections)	20.5 (61 sections)	
Electives	24.9 (38 sections)	24.7 (47 sections)	
PE			
Health			
PE/Health	19.4 (15 sections)	19.9 (16 sections)	

Personnel Needs to Implement 2013-2014

School	2012 - 2013 Staff	2013 - 2014 Staff	Increase/Decrease
Administrators	4	4	0
Counselors	4	4	0
Librarian	1	1	0
A+ Schools Coordinator	0.5	0.5	0
Activities Director	1	1	0
I.S.S. Supervisor	2	2	0
*Regular Classroom Teachers	67.06	67.06	?
Reading	1	1	0
Gifted	0	0	0
Special Education/ELL Teachers/Pro Coned	14	14	0
Alternative School (Inc. one Counselor)	9	9	0
(Does not inc. JJC or ASP)			
Total	103.56		

There is a need for another art teacher, but elem (OBE) need is greater.
Give up an ISS for an Instructional Coach.

	Projected 2012-2013	Actual 2012-2013	Projected 2013-2014
9 th Grade	294	302	326
10 th Grade	347	334	302
11 th Grade	350	345	334
12 th Grade	299	334	345
Total	1290	1315	1307

Projected student increase - using December 1, 2012 attendance numbers.
Above numbers include Alternative School students.
Current enrollment at Horizons is ** for Regular Alternative and Missouri Options.

Personnel Needs to Implement 2013-2014

	Actual 2011 - 2012		Actual 2012 - 2013		Projected 2013 - 2014	
	Sections	Average Class Size	Sections	Average Class Size	Sections	Average Class Size
9 th Comm Arts/A, B	16	21.4	13	22.6	*	*
10 th Comm Arts/A, B	16	20.8	16	20.2	*	*
11 th Comm Arts/A, B, IB	13	19.7	13	20.6	*	*
11 th & 12 th - Electives	38	17.8	40	17.8	*	*

> The 11th and 12th grade students can take more than one Language/Comm Arts elective.

	Actual 2011 - 2012		Actual 2012-2013		Projected 2013-2014	
	Sections	Average Class Size	Sections	Average Class Size	Sections	Average Class Size
French I, II, III, IV	16	8.9	16	8.1	*	*
Spanish I, II, III, IV	21	17.3	24	15.3	*	*

Note: Each High School Elective is counted as a section regardless of semester or year type.

Personnel Needs to Implement 2013-2014

Sections	Actual 2011-2012		Actual 2012-2013		Projected 2013-2014	
	Sections	Actual Average Class Size	Sections	Actual Average Class Size	Projected Sections	Projected Average Class Size
9 th - World History	16	23.4	14	21.7	*	*
10 th - American History	14	21.1	13	22.4	*	*
11 th and 12 th - Electives	31	16.9	34	17	*	*
9-12 - Consumer Math						
Pre-Algebra	43	20.6	46	20.5	*	*
Algebra I and II						
Geometry						
11-12 - Trigonometry						
IB Math Studies	12	16.9	15	18.1	*	*
Calculus - Statistics						
College Algebra						
Java & I and II						

Personnel Needs to Implement 2013-2014

Sections	Actual 2011-2012		Actual 2012-2013		Projected 2013-2014	
	Sections	Actual Average Class Size	Sections	Actual Average Class Size	Projected Sections	Projected Average Class Size
9 th Physics First	13	26.1	12	24.1	*	*
10 th Princ of Biology						
Chem of Environment	25	23.2	15	37.7	*	*
Physics Technology**						
AP Chemistry**						
11 th and 12 th Electives	23	13.9	31	11.3	*	*
** moved to electives 12-13						
Health	14	23.5	13	19.6	*	*
Physical Education	26	22.4	23	20.6	*	*
11 th and 12 th Electives	22	18.7	23	19.3	*	*

High School Notes:

*Mr. Thompson to provide information as soon as it is available.

School	Actuals 2012-2013		Projected 2013-2014		Increase or Decrease
	Count	Teachers Paras Interpreters	Count	Teachers Paras Interpreters	
Parents As Teachers Coordinator	664	1 c 3 ite	screening high needs families	1 c 3 ite	same
Full-time Educ Part-time Educ	226	1 pte 1 pte	1 pte	1 pte	same
Dogwood Preschool & ECSE Teachers	116	5 t 12 p	125	5 t 12 p	same
Process Coordinator/Diagnostician		1		1	same
Dogwood K-2 Special Education Teachers	80	4 t 2 p	90	5 t 2 p	+1
Process Coordinator (life skills room)		1		1	same
Hawthorn 3-4 Special Education Teachers	57	3.5 t 1 p	66	4 t 1 p	plus 0.5 same
Process Coordinator (life skills room)		.8		.8	1
Oak Ridge 5-8 Special Education Teachers	83	5.5 t 1 p	87	6 t 1 p	plus 0.5 same
Process Coordinator		.8		.8	same
Hurricane Deck Preschool & ECSE Teachers	19	1 t 1 p	19	1 t 1 p	same
K-4 Special Education Teachers	14	.7 t 1 p	20	.95 t 1 p	same plus 0.25
Process Coordinator		.2		.2	same
Ozage Beach Preschool & ECSE Teachers	22	1 t 2 p	22	1 t 2 p	same
K-4 Special Education Teachers	22	1 t 2 p	21	2 t 1 p	Plus 1 -1
Process Coordinator		.2		.2	same

School	Actuals 2012-2013		Projected 2013-2014		Increase or Decrease
	Count	Teachers Paras Interpreters	Count	Teachers Paras Interpreters	
7-8 Special Education Teachers	67	7 t 2 p 0 i	79	7 t 2 p 0 i	same
Process Coordinator-Life Skills/Map A		1		1	same
9-12 Special Education Teachers	110	11 t 4 p	123	11 t 4 p	same
Process Coordinator-Life Skills/Map A		1		1	same
English Language Learners - All district	69 serving 14 monitor	3 t 1 p .05 implm	66 serving 10 monitor	3 t 1 p .05 implm	same
Ozage Beach	19 serving 3 monitor	.15 t 1 p	21 serving 1 monitor	.15 t 1 p	same
Hurricane Deck J Lsenby serves	2 serving 0 monitor	.05 t .05 implm	1 serving 1 monitor	.05 t 0 p	same
Dogwood	14 serving 0 monitor	.42 0 p	12 serving 0 monitor	.42 0 p	same
Hawthorn	5 serving 0 monitor	.22 t 0 p	7 serving 0 monitor	.22 t 0 p	same
Oak Ridge	9 serving 3 monitor	.58 t 0 p	7 serving 3 monitor	.58 t 0 p	same
Middle School	6 serving 0 monitor	.58 t 0 p	6 serving 1 monitor	.58 t 0 p	same
High School	17 serving 8 monitor	1 t 0 p	11 serving 4 monitor	1 t 0 p	same

Personnel Needs to Implement 2013-2014

School	Actual 2012 - 2013 Staff	Projected 2013 - 2014 Staff	Increase/Decrease
Administrators	2	-	-
Counselors/Evaluators	1	-	-
Teachers/Other	15.68	2	-
Total	18.68		

LCIC Notes: Possibly increase teachers by 1 if need for CSI offering.

School	Actuals 2012-2013		Projected 2013-2014		Increase or Decrease
	Count	Teachers Paras Interpreters	Count	Teachers Paras Interpreters	
Speech Pathologists/Implementor - District-wide all	255	5.5 slip .2 impl	224	0 impl	plus .2
Preschool	51	FTE 2	51	FTE 2	same
Ossage Beach	16	.27	14	.27	same
Hurricane Deck	8	2	10	2	plus .2
Dogwood	75	1.62	79	1.62	same
Hawthorn	53	.77	34	.77	same
Oak Ridge	28	.4	24	.4	same
Middle School	15	.22	7	.22	same
High School	9	.11	5	.11	same
Life Skills - All District	40		41 to 44		same
Dogwood K-2	11	2 t 6 p 0 i	12	2 t 6 p 0 i	same
Hawthorn 2-4	7	1 t 2 p 0 i	6	1 t 3 p 0 i	same
Middle School 5-8	10	1 t 3 p 0 i	9 to 12	1 t 3 p 0 i	same
High School 8-12 to age 21	12	1 t 3 p 0 i	14	1 t 3 p 0 i	same
Occupational Therapy - Physical Therapy - contracted	**	4 days 2 days	**	4 days 2 days	same
District Office Secretaries		2	*	2	same
Assistant Director		1	*	1	same
Director		1	*	1	same
Department of Interventions Notes:					

Paraprofessionals are the best guess based on current enrollment, movement of students in and out could change numbers.

Personnel Needs to Implement 2013-2014

School	Actual 2012 - 2013 Staff	Projected 2013 - 2014 Staff	Increase/Decrease
Central Office	4	4	
Special Programs	2	2	
Directors / Coordinators	5	5	
Technology & Data Support	7	7	

Elementary	
Middle School	
High School	
LCIC	
Special Programs	
District	

School	Projected Increase/Decrease 2013-2014
Hawthorn-secretary if counselor falls through Oak Ridge - pt outside recess monitor Osage Beach - pt lunch monitor Osage Beach - possibly 2 classroom paras Hurricane Deck - pt lunch monitor stipend for year book? SROs?	

Camdenton R-III School District Building Review Rubric

Camdenton R-III School District Building Review Rubric

Date:

Date:

	Instructional Strategies		Communication Arts		Mathematics	
	Yes <input type="checkbox"/>	No <input type="checkbox"/>	Yes <input type="checkbox"/>	No <input type="checkbox"/>	Yes <input type="checkbox"/>	No <input type="checkbox"/>
	Comment	Comment	Comment	Comment	Comment	Comment
Building Improvement Plan	Yes <input type="checkbox"/>	No <input type="checkbox"/>	Yes <input type="checkbox"/>	No <input type="checkbox"/>	Yes <input type="checkbox"/>	No <input type="checkbox"/>
Aligned to District Plan	Yes <input type="checkbox"/>	No <input type="checkbox"/>	Yes <input type="checkbox"/>	No <input type="checkbox"/>	Yes <input type="checkbox"/>	No <input type="checkbox"/>
Content/Grade Level Team Plans: Provide templates as samples to the administrative team.	Yes <input type="checkbox"/>	No <input type="checkbox"/>	Yes <input type="checkbox"/>	No <input type="checkbox"/>	Yes <input type="checkbox"/>	No <input type="checkbox"/>
Comment:	Comment:	Comment:	Comment:	Comment:	Comment:	Comment:
Aligned to Building Plan	Yes <input type="checkbox"/>	No <input type="checkbox"/>	Yes <input type="checkbox"/>	No <input type="checkbox"/>	Yes <input type="checkbox"/>	No <input type="checkbox"/>
Student Progress Data: Must include the following: Intervention tracking form with updated information; Record of relations for achievement of goals; Record of relations for attendance on instructional need.	Yes <input type="checkbox"/>	No <input type="checkbox"/>	Yes <input type="checkbox"/>	No <input type="checkbox"/>	Yes <input type="checkbox"/>	No <input type="checkbox"/>
Student Achievement Data: Must include a record of student performance on pre and post assessments as well as sample writing from common scoring rubrics.	Yes <input type="checkbox"/>	No <input type="checkbox"/>	Yes <input type="checkbox"/>	No <input type="checkbox"/>	Yes <input type="checkbox"/>	No <input type="checkbox"/>
Summary NA	Summary NA	Summary NA	Summary NA	Summary NA	Summary NA	Summary NA
Common Formative Assessments: Must contain pre and post assessments for each power standard covered.	Yes <input type="checkbox"/>	No <input type="checkbox"/>	Yes <input type="checkbox"/>	No <input type="checkbox"/>	Yes <input type="checkbox"/>	No <input type="checkbox"/>
Evidence of Walkthrough Observation	Yes <input type="checkbox"/>	No <input type="checkbox"/>	Yes <input type="checkbox"/>	No <input type="checkbox"/>	Yes <input type="checkbox"/>	No <input type="checkbox"/>
Defined Goals	Yes <input type="checkbox"/>	No <input type="checkbox"/>	Yes <input type="checkbox"/>	No <input type="checkbox"/>	Yes <input type="checkbox"/>	No <input type="checkbox"/>
Collaboration Documents: Must contain copies of team meeting reports from professional collaboration release days as well as record of instructional interventions designed to address specific learning needs.	Yes <input type="checkbox"/>	No <input type="checkbox"/>	Yes <input type="checkbox"/>	No <input type="checkbox"/>	Yes <input type="checkbox"/>	No <input type="checkbox"/>
Team Meeting Reports	Yes <input type="checkbox"/>	No <input type="checkbox"/>	Yes <input type="checkbox"/>	No <input type="checkbox"/>	Yes <input type="checkbox"/>	No <input type="checkbox"/>
Commentary	Commentary					

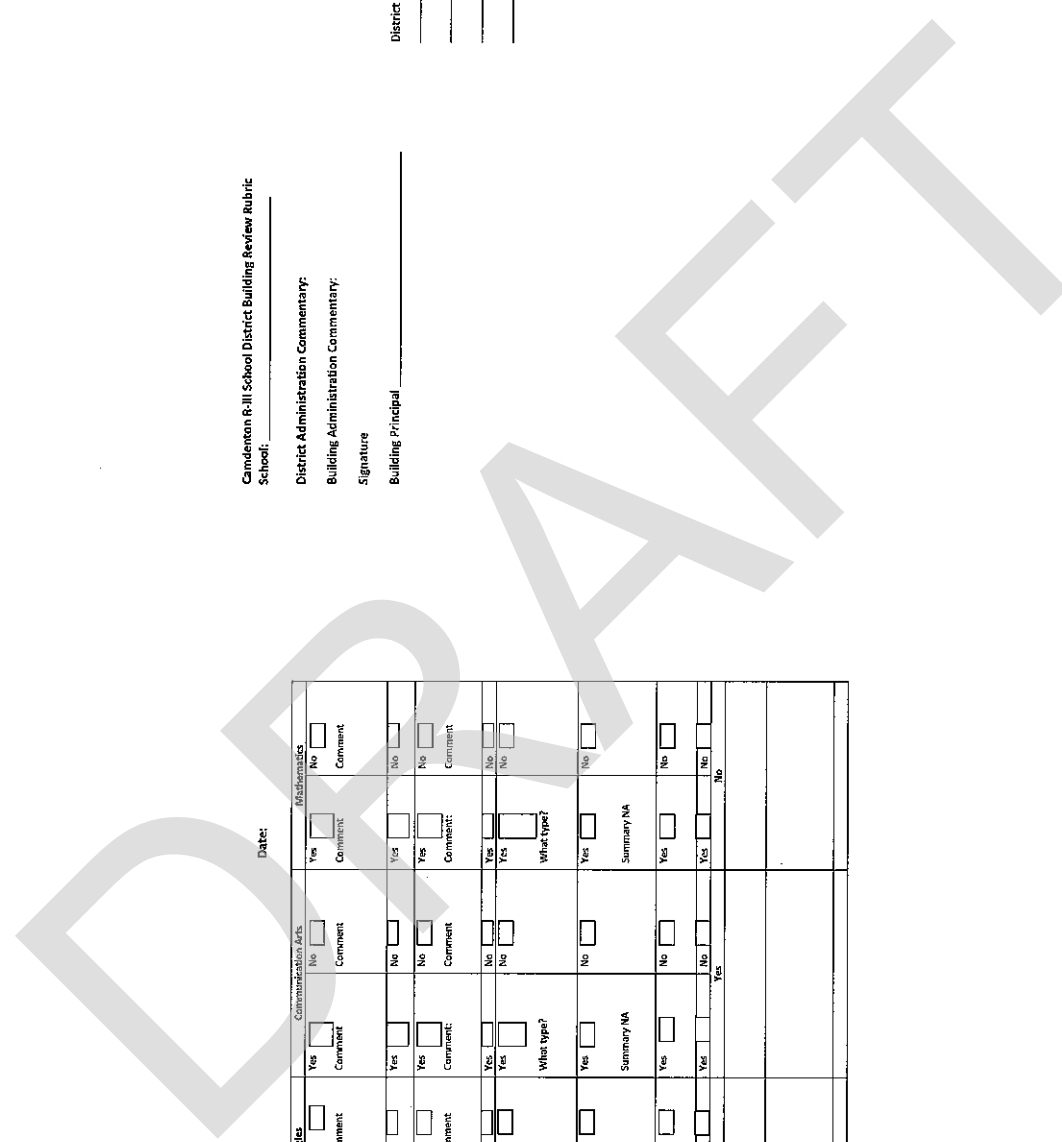
District Administration Commentary:

Building Administration Commentary:

Signature

Building Principal

District Review Team

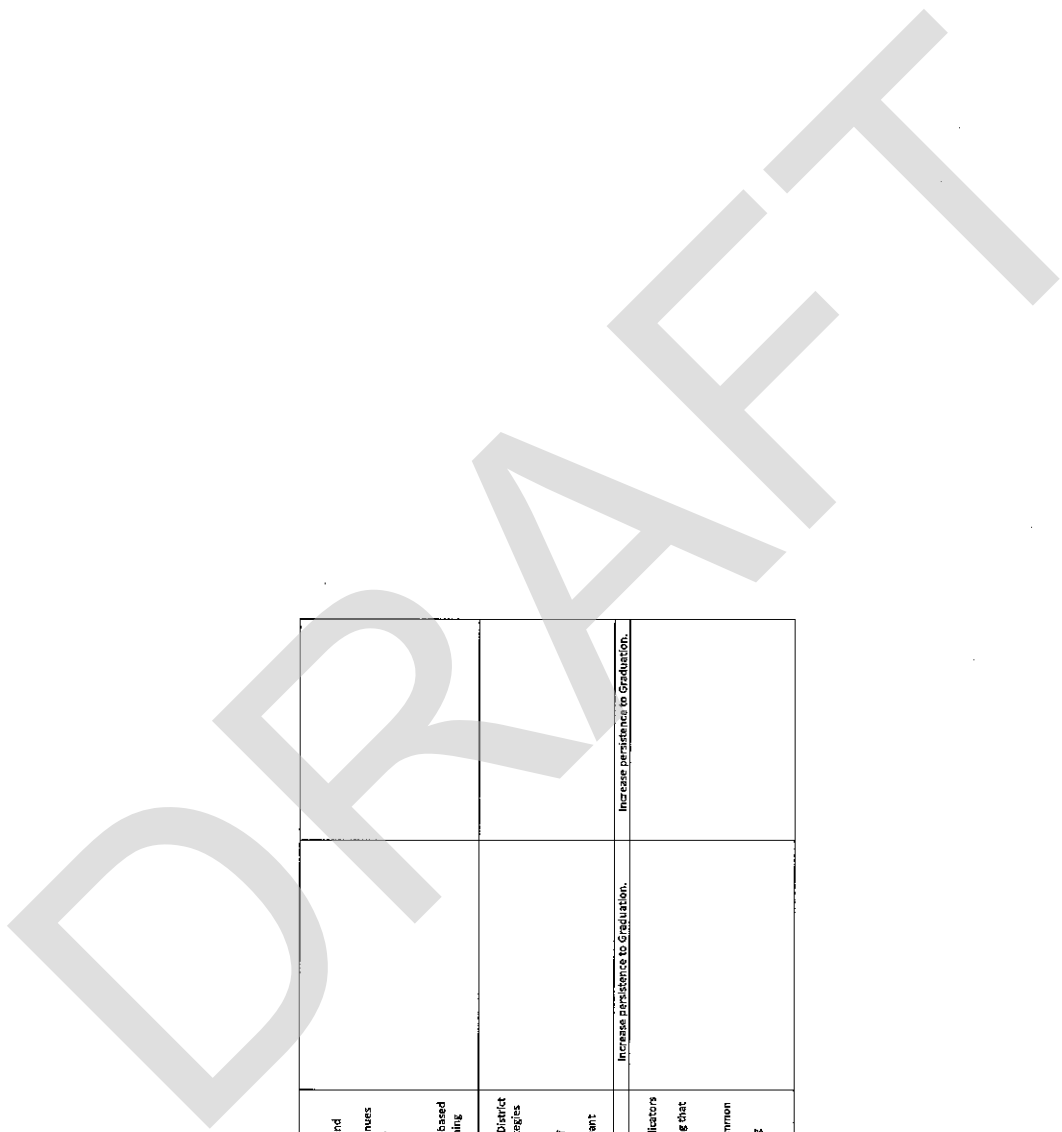


2012-2015 Camdenon R-III Strategic Planning Template
 Building Name _____
 Year _____

Component	Code	Description	Student Performance Building Level Plan	Building Results
Goal Objective	A	Student Performance: Educators will improve student learning through the implementation of research based strategies and school reform initiatives.	Student Performance: Educators will improve student learning through the implementation of research based strategies and school reform initiatives.	Student Performance: Educators will improve student learning through the implementation of research based strategies and school reform initiatives.
Persons Responsible		Deputy Superintendent for Academic Services, Building Administrators, Faculty		
Progress Measures		Meet the district performance goal on local common power standard assessment (District Performance Goal), state assessment (Established State Proficiency or Growth Targets) The Camdenon R-III School District will increase the graduation rate, as calculated by the Department of Elementary and Secondary Education, to 85% by 2013-2013-2014.		
Strategy 1	1	Improve student motivation and engagement	Improve student motivation and engagement	Improve student motivation and engagement
Action Steps (Motivation)	M	<ol style="list-style-type: none"> The faculty of the Camdenon R-III School District will facilitate student academic goal creation. The faculty of the Camdenon R-III School District will create methods for student self-monitoring on scoring template over time. The faculty of the Camdenon R-III School District will provide opportunities for meaningful student feedback. Individual school buildings will create building-wide discipline plans that address behavior, safety, and climate. 		
Action Steps (Engagement)	E	<ol style="list-style-type: none"> The faculty of the Camdenon R-III School District will communicate high standards of achievement. The faculty of the Camdenon R-III 		

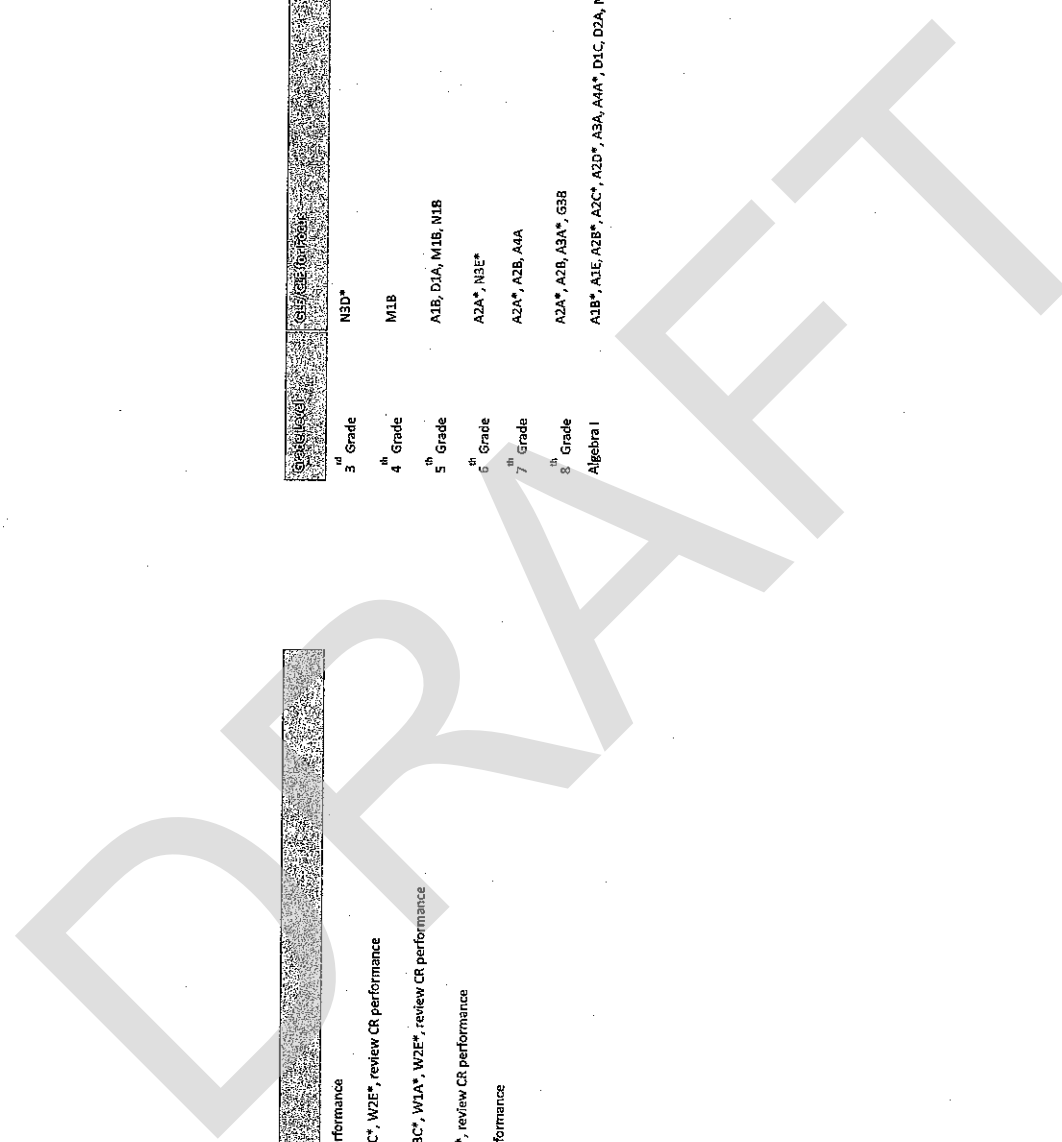
2012-2015 Camdenon R-III Strategic Planning Template
 Building Name _____
 Year _____

Strategy 2	1	2	3	4
Action Steps (Literacy)	1	<p>The faculty of the Camdenon R-III School District will:</p> <ol style="list-style-type: none"> Implement strategies to improve early literacy. Continue MRI at middle and secondary levels. Continue emphasis on consistent writing process with an emphasis on non-fiction. 	<p>School District will develop meaningful assignments in subject areas, including science, social studies, and arts. (Include content, skills and standards experiences and social studies, creating and implementing lessons that incorporate relevant material and utilizing authentic literacy use of contemporary topics and non-fiction reading and writing to address real world issues) as a vehicle to improve performance in comprehension, writing, and student engagement.</p>	<p>Improve Instructional Strategies</p>
Action Steps (Unique Programming)	U	<p>The faculty of the Camdenon R-III School District will address the needs of unique student demographic groups by:</p> <ol style="list-style-type: none"> Focusing on developing background knowledge and vocabulary. Maintaining high expectations for all students. Facilitating poverty training and simulations on a routine basis for faculty. Continuing holiday guest program and expand the distribution of necessities to 	<p>Improve Instructional Strategies</p>	<p>Improve Instructional Strategies</p>



2012-2015 Camdenon R-III Strategic Planning Template
 Building Name _____
 Year _____

Action Steps (Mathematics)	MI	<p>students who need this support.</p> <ol style="list-style-type: none"> 5. Creating buddy learner program. 6. Meeting families in their homes and neighborhood. 7. Continuing the exploration of avenues to increase parental involvement. 8. Expanding access to assistive technology and address unique programming issues. 9. Pre-planning the use of evidence-based strategies to address unique learning needs. 	
Action Steps	MI	<p>The majority of the Camdenon R-III School District will implement effective instructional strategies designed to:</p> <ol style="list-style-type: none"> 1. Improve number sense. 2. Create a deeper understanding of algebraic relationships. 3. Place a greater emphasis on relevant application. 	
Strategy 3 Action Steps	3	<p>Increase persistence to graduation.</p> <p>The District will:</p> <ol style="list-style-type: none"> 1. Utilize data from the common indicators for students failing to persist to graduation to design programming that will address student needs. 2. Create an at-risk summer school program for students meeting common indicators for at-risk students. 3. Create and implement an ongoing mentoring program for students identified as potential dropouts. 	<p>Increase persistence to graduation.</p>



Grade Level: **GLE/ALS for Focus**

Grade Level	GLE/ALS for Focus
3 rd Grade	RIH, R2C*, W2E, review CR performance
4 th Grade	RIH (drawing conclusions), R3C*, W2E*, review CR performance
5 th Grade	RIH (drawing conclusions)*, R3C*, W1A*, W2E*, review CR performance
6 th Grade	IL1C, R2C*, R3C*, W2A*, W2C*, review CR performance
7 th Grade	IL1C, R1E, R1H*, W2E*, CR performance
8 th Grade	W2B, W2E*
English I	RIH*, R1L
English II	R1H*, R2A, R3B, R3C*, W2E*

Grade Level: **GLE/ALS for Focus**

Grade Level	GLE/ALS for Focus
3 rd Grade	N3D*
4 th Grade	M1B
5 th Grade	A1B, D1A, M1B, M1B
6 th Grade	A2A*, N3E*
7 th Grade	A2A*, A2B, A4A
8 th Grade	A2A*, A2B, A3A*, G3B
Algebra I	A1B*, A1E, A2B*, A2C*, A2D*, A3A, A4A*, D1C, D2A, M1A, N1B

Dr. Henry

Component	Code	Description	Building Level Plan	Building Results
Goal	I	Student Performance	Student Performance	Student Performance
Objective	A	Educators will improve student learning through the implementation of research based strategies and school reform initiatives.	Educators will improve student learning through the implementation of research based strategies and school reform initiatives.	Educators will improve student learning through the implementation of research based strategies and school reform initiatives.
Persons Responsible		Deputy Superintendent for Academic Services, Building Administrators, Faculty	Classroom Teachers & Principal	Classroom Teachers & Principal
Progress Measures		Meet the district performance goal on local common power standard assessment (District Performance Goal), state assessment (Established State Proficiency or Growth Targets) The Camdenton R-III School District will increase the graduation rate, as calculated by the Department of Elementary and Secondary Education, to 88% by 2015 (85-2013, 86-2014).	Each classroom will meet the district goal for all identified power standards. 80% @ a 3 or higher OR 20% growth <u>See charts: Ongoing</u>	Semester reviews of Power Standard Data by grade level. <u>See Charts: Ongoing</u>
Strategy 1	1	Improve student motivation and engagement	Improve student motivation and engagement	Improve student motivation and engagement
Action Steps (Motivation)	M	<ol style="list-style-type: none"> The faculty of the Camdenton R-III School District will facilitate student academic goal creation. The faculty of the Camdenton R-III School District will create methods for student self-monitoring on scoring template over time. The faculty of the Camdenton R-III School District will provide opportunities for meaningful student feedback. Individual school buildings will create building-wide discipline plans that address behavior, safety, and climate. 	<ol style="list-style-type: none"> Teachers will collaborate to identify instructional strategies that are most motivating and successful. <u>*Cooperative Learning</u> Leader in Me will be implemented to improve student engagement and motivation. <u>*Implemented and continuing to grow</u> 	<ol style="list-style-type: none"> Collaboration sheets will be completed and shared electronically. <u>*Completed and ongoing</u> All classroom teachers will have the opportunity to attend a Leadership Day. <u>*Over half have and rest will in March</u>
Action Steps (Engagement)	E	<ol style="list-style-type: none"> The faculty of the Camdenton R-III School District will communicate high expectations for all students. The faculty of the Camdenton R-III 	<ol style="list-style-type: none"> Data notebooks will be utilized in all grade levels. <u>See examples</u> 	<ol style="list-style-type: none"> Quarterly review of individual classroom data notebooks to ensure they are being updated regularly.

		School District will develop meaningful assignments in all subject areas, specifically in disciplines such as science (including conservation and real world experiences) and social studies, creating and implementing lessons that incorporate relevant material and utilizing authentic literacy (use of contemporary topics and non-fiction reading and writing to address real world issues) as a vehicle to improve performance in comprehension, writing, and student engagement.	<ol style="list-style-type: none"> Teachers will work collaboratively to create units of study. <u>*Beginning</u> 	<ol style="list-style-type: none"> By the end of the year our goal is to have at least one complete unit of study per grade per subject.
	2	Improve instructional strategies	Improve instructional strategies	Improve instructional strategies
Action Steps (Literacy)	L	The faculty of the Camdenton R-III School District will: <ol style="list-style-type: none"> Implement strategies to improve early literacy. Continue MRI at middle and secondary levels. Continue emphasis on consistent writing process with an emphasis on non-fiction. 	<ol style="list-style-type: none"> Continue to use balance literacy workshop approach, but implement Journey's LA into our curriculum. <u>*Ongoing: Need to ensure implementation and effective pieces</u> Ensure that all students are reading 1/2 fiction and 1/2 nonfiction. Ensure that students are writing as much nonfiction as fictional pieces. <u>*Ongoing: This is better, but teachers need PD on how to effectively teach informational text</u> 	<ol style="list-style-type: none"> Teacher evaluations and walk-throughs should show that nonfiction is a key focus in both reading and writing. <u>Ongoing: Hard to ensure that walk through is while nonfiction is being addressed</u>
Action Steps (Unique Programming)	U	Action steps: The faculty of the Camdenton R-III School District will address the needs of unique student demographic groups by: <ol style="list-style-type: none"> Focusing on developing background knowledge and vocabulary. Maintaining high expectations for all students. Facilitating poverty training and 	<ol style="list-style-type: none"> Use of Marzano's vocabulary strategies. <u>Ongoing</u> High expectations and goals for all students. <u>Ongoing: provide PD for teachers to ensure they understand the rigor of CCSS</u> Provide necessary vocabulary skills for ELL students. 	<ol style="list-style-type: none"> Student vocabulary notebooks will be reviewed quarterly. Goal setting and progress will be shown in data notebooks. <u>Ongoing</u> ELL teacher will provide quarterly updates on student progress. <u>Ongoing</u>

		<p>simulations on a routine basis for faculty.</p> <ol style="list-style-type: none"> Continuing buddy pack program and expand the distribution of necessities to students who need this support. Creating buddy learner program. Meeting families in their homes and neighborhood. Continuing the exploration of avenues to increase parental involvement. Expanding access to assistive technology and address unique programming issues. Pre-planning the use of evidence-based strategies to address unique learning needs. 	<p>4. <u>Ongoing</u> Buddy pack program will continue <u>Ongoing</u></p>	<p>4. Counselor will monitor buddy pack program and needs. <u>Ongoing</u></p>
Action Steps (Mathematics)	M	<p>Action steps: The faculty of the Camdenon R-III School District will implement effective instructional strategies designed to:</p> <ol style="list-style-type: none"> Improve number sense. Create a deeper understanding of algebraic relationships. Place a greater emphasis on relevant application. 	<ol style="list-style-type: none"> Teachers will attend district wide PD with Ricky Mikelman to learn more number sense strategies. More project-based learning will be used to improve use of real life mathematical situations. 	<ol style="list-style-type: none"> Teacher evaluations and walk-throughs should show use of proven instructional strategies. <u>Ongoing</u> Teachers will share project-based units during peer observations. <u>Ongoing</u>
Strategy 3	3	Increase persistence to Graduation.	Increase persistence to Graduation.	Increase persistence to Graduation.
Action Steps		<p>The District will:</p> <ol style="list-style-type: none"> Utilize data from the common indicators for students failing to persist to graduation to design programming that will address student needs. Create an at-risk summer school program for students meeting common indicators for at-risk students. Create and implement an ongoing monitoring program for students 	<ol style="list-style-type: none"> Attendance will be monitored and those with issues will be contacted by the counselor to assess situation and create a plan of action. SIT folders will be kept on any students that are at risk beginning in kindergarten and continued through each grade. <u>Ongoing: Collaborate every Monday</u> 	<ol style="list-style-type: none"> Counselor will keep track of those with attendance issues and report by quarter concerns and needs. SIT folders will be discussed weekly and plan of action determined. <u>Ongoing: Collaborate every</u>

		Identified as potential drop-outs.	<p>3. Students will be asked to attend after school tutoring as needed based on academic data.</p>	<p><u>Monday</u></p> <p>3. PASS students data will be collected and shared between PASS teachers and classroom teachers on a quarterly basis. <u>Ongoing: Data is given to PASS director at least quarterly.</u></p>
--	--	------------------------------------	--	--